



APPENDICES

DRC-IHPplus Final Report 2015–2018

Integrated Health Project Plus
in the Democratic Republic of Congo



Published: July 31, 2018

Project Name: Integrated Health Project Plus in the Democratic Republic of Congo

Cooperative Agreement Number: AID-OAA-A-1100024 **Subagreement Number:** OAA-A-11-00024-01-MSH

This product describes the work of the Integrated Health Project Plus, which was made possible by the generous support of the United States Agency for International Development (USAID), the United States President's Malaria Initiative (PMI), and the United States President's Emergency Program for AIDS Relief under Subagreement Number OAA-A-11-00024-01-MSH under USAID Cooperative Agreement Number AID-OAA-A-11-00024. The contents are the responsibility of the Democratic Republic of Congo Integrated Health Project Plus and do not necessarily reflect the views of USAID or the United States Government.

Cover Photo: XXXXX

Report Design: Erin Dowling Design

Appendices

Final Report:
The Integrated Health Project Plus
in the Democratic Republic of Congo
2015–2018

Integrated Health Project Plus in the Democratic Republic of Congo



List of Appendices

- Appendix 1. IHP Performance Monitoring Plan: Indicator detail
- Appendix 2. List of all Health Zones
- Appendix 3. Organizational Structure of Kinshasa Office Headquarters, IHPplus
- Appendix 4. List of Publications and Conference Abstracts
- Appendix 5. List of Success Stories
- Appendix 6. List of Trainings
- Appendix 7. Documents and/or Tools Developed with the MOH
- Appendix 8. Select Pharmaceutical Data
- Appendix 9. Integrated Health Project Plus STTA and Conference Attendance
PY1 – PY3

Appendix 1. IHP Performance Monitoring Plan: Indicator detail



USAID/DRC/IHPplus Objective: Improve the enabling environment for, and increase the availability and use of, high-impact health services, products, and practices for FP, MNCH, nutrition, malaria, TB, HIV and AIDS, and WASH in target health zones

Indicator	Definition	Baseline	TOTAL IHPplus			Achievement Rate (%)
			PY1	PY2	PY3	
1 FP: Couple years of protection (CYP) in USG-supported programs	The estimated protection provided by family planning (FP) services during a one-year period, based upon the volume of all contraceptives provided to clients at health facilities and at the community level in the IHPplus target areas during that period	426,098	430,425	346,890	331,318	69
1.1 FP: Couple years of protection (CYP) after exclusion of LAM and self-observation methods (NFP) for FP in USG-supported programs	The estimated protection provided by FP services during a one-year period, based upon the volume of all contraceptives provided to clients (exclusion of LAM and NFP) in the IHPplus target areas during that period	169,760	213,253	236,885	281,569	104
2 FP: Number of counseling visits for FP/reproductive health (RH) as result of USG support	Number of FP/RH counseling visits at USG-supported service delivery points	605,616	592,592	754,641	494,458	87
3 FP: Percent of USG-assisted service delivery sites providing FP counseling and/or services	Numerator: Number of USG-assisted service delivery sites providing FP information and/or services Denominator: Number of service delivery sites planned to receive USG assistance over life of project Numerator/Denominator (in percentage)	n/a	2,152	2,154	2,069	
4 FP: Number of USG-assisted community health workers (CHWs) providing FP information, referrals, and/or services during the year	USG-assisted: Funded with congressionally-earmarked FP funds for any kind of assistance CHW: Any type of CHW as defined by country program FP Information: FP information and/or FP counseling provided by a CHW FP referrals: FP referrals to public or private sector services provided by a CHW FP Services: FP contraceptive services provided by a CHW Year: US Fiscal Year	n/a	1,116	2,152	2,032	115
5 FP: Number of USG-assisted health facilities experiencing stock-outs of Depo-Provera during the quarter	Maximum number of USG-supported health facilities experiencing stock-outs of Depo-Provera during the quarter	146	640	318	177	11

*Achievement rate is not applicable when target is 0.

Indicator	Definition	Baseline	TOTAL IHPplus			PY3	PY2	PY1	IHPplus	Target	Achievement Rate (%)
			PY3	PY2	PY1						
6 MNCH: Percent of pregnant women attending at least one antenatal care (ANC) visit with a skilled provider from USG-supported health facilities	Numerator: Number of pregnant women attending at least one ANC visit with a skilled provider from USG-supported health facilities Denominator: Number of expected pregnancies in USG-supported health facilities (4% of total population)	408,357	445,122	567,562	413,902	418,535	401,981	1,426,586	1,361,186		
			106%	104%	103%	106%	105%	100%	105		
7 MNCH: Percent of pregnant women attending at least four ANC visits with a skilled provider from USG-supported health facilities	Numerator: Number of pregnant women attending at least four ANC visits with a skilled provider from USG-supported health facilities Denominator: Number of expected pregnancies in USG-supported health facilities (4% of total population)	204,787	321,246	323,621	224,619	321,246	323,621	869,486	952,830		
			53%	59%	56%	77%	64%	70%	91		
8 MNCH: Percent of deliveries with a skilled birth attendant (SBA) in USG-supported facilities	Numerator: Number of deliveries with a SBA in USG-supported facilities Denominator: Number of expected deliveries in USG-supported health facilities (4% of total population)	386,812	379,261	482,390	350,075	379,261	482,390	1,211,726	1,238,679		
			91%	89%	87%	91%	89%	91%	98		
9 MNCH: Number of women giving birth who received uterotonic in the third stage of labor (OR immediately after birth) through USG-supported programs	Number of women who gave birth who received a uterotonic in the third stage of labor (OR immediately after birth) supplied by a USG-assisted program or with assistance of a health worker trained by a USG-assisted program. Uterotonics could include oxytocin or misoprostol. Uterotonics represent one element of active management of third stage of labor (AMTSL).	331,511	341,302	459,535	327,239	341,302	459,535	1,128,076	1,189,960		
			106								
10 MNCH: Number of postpartum/newborn visits within three days of birth in USG-supported programs	Number of postpartum/newborn visits within three days of birth (Includes all skilled attendant deliveries plus facility or outreach postpartum/newborn visits for mothers/newborns who did not have SBA delivery) (4% of total population)	339,446	326,887	451,132	337,399	326,887	451,132	1,115,418	1,056,052		
			106								
11 MNCH: Number of newborns not breathing at birth who were resuscitated in USG-supported programs	Number of newborns not breathing at birth who were resuscitated with stimulation and/or bag and mask provided by a USG-assisted program, or by a health worker trained in resuscitation by USG-assisted program.	n/a	8,967	5,531	1,964	8,967	5,531	16,462	10,750		
			153								

*Achievement rate is not applicable when target is 0.

Indicator	Definition	Baseline	PY1	PY2	PY3	TOTAL IHPplus		
						IHPplus	Target	Achievement Rate (%)
12 MNCH: Percent of newborns receiving essential newborn care through USG-supported programs	Numerator: Number of newborn infants who received essential newborn care from trained facility, outreach or community health workers through USG-supported programs/IHPplus target area Denominator: Number of newborns delivered in the IHPplus target areas (3.49% of total population) Numerator/Denominator (in percentage)	339,780	349,626	461,768	362,037	1,173,431	1,337,690	
			386,812	349,626	480,774	380,421	1,210,821	1,209,922
13 MNCH: Number of newborns receiving antibiotic treatment for infection from trained health workers through USG-supported programs	Number of newborn infants identified as having possible infection who received antibiotic treatment from appropriately trained facility, outreach or community health workers through USG-supported programs/IHPplus target area (4% of total population *6% Infection rate-MICS 2010)	88%	100%	96%	95%	97%	98%	99
			30,357	26,373	26,440	24,491	77,304	81,690
14 MNCH: Number of child pneumonia cases treated with antibiotics by trained facility or community health workers in USG-supported programs	ART is viewed by the scientific community and PEPFAR not only as essential for decreasing morbidity and mortality, but also as a highly effective approach to prevent HIV transmission. This indicator monitors the proportion of viral load tests from adult and pediatric ART patients with an undetectable results (<1,000 copies/ml), allowing ART programs to evaluate to what degree they are improving the clinical outcomes of patients in care.	354,596	332,922	455,205	455,342	1,243,469	1,161,829	107
			447,108	497,516	639,907	423,430	1,560,853	1,581,575
15 MNCH: Number of cases of child diarrhea treated in USG-supported programs	Number of oral rehydration solution (ORS) packets distributed through USG-assisted programs (this is a proxy indicator for the number of cases of child diarrhea treated in USG-assisted programs)	346,925	368,475	480,774	357,168	1,206,417	1,172,552	
			337,493	347,618	480,774	405,873	1,234,265	1,234,265
16 MNCH: Percent of children less than 12 months of age who received three doses of Diphtheria, Tetanus, Pertussis (DTP), Hepatitis B (HepB) and Haemophilus Influenza type B (Hib) (or DPT-HepB-Hib3) from USG-supported programs	Numerator: Number of children less than 12 months who received DPT-HepB-Hib1-3 vaccine from USG-supported programs/IHPplus target areas Denominator: Number of children less than 12 months of age in the IHPplus target areas (3.49% of total population — Ref : Expanded Program of Immunization)	103%	106%	100%	88%	98%	95%	103
			19,045	15,592	20,354	18,157	54,103	60,610
17 MNCH: Drop-out rate in DPT-HepB-Hib3 among children less than 12 months of age	Numerator: Number of children less than 12 months who did not complete the full regimen of DPT-HepB-Hib1-3 vaccination Denominator: All children less than 12 months who received DPT-HepB-Hib1	365,970	366,645	462,758	382,804	1,212,207	1,212,207	
			5%	4%	4%	5%	4%	5%

*Achievement rate is not applicable when target is 0.

Indicator	Definition	Baseline	PY			PY3	TOTAL IHPplus		
			PY1	PY2	PY3		IHPplus	Target	Achievement Rate (%)
18	MNCH: Percent of children less than 12 months of age who received measles vaccine from USG-supported programs	334,963	344,862	435,678	375,069	1,155,609	1,167,120		
			337,493	347,618	405,873	1,228,547	1,228,547		
19	MNCH: Number of USG-assisted health facilities experiencing stock-outs of ORS during the quarter	99%	99%	92%	92%	94%	95%	99	
			80	422	379	422	100	24	
20	NUTRITION: Proportion of pregnant women who received iron-folate to prevent anemia	424,488	527,593	346,890	239,024	1,113,507	869,486		
			386,812	224,619	321,246	869,486	869,486		
21	NUTRITION: Number of mothers of children 2 years of age or less who have received nutritional counseling for their children	487,081	564,212	856,437	973,144	2,393,793	3,115,432	77	
			110%	235%	107%	74%	128%	100%	
22	NUTRITION: Number of people trained in child health and nutrition through USG-supported programs	n/a	131	673	112	916	1,869	49	
			304	587	161	587	200	34	
23	NUTRITION: Number of USG-supported health facilities experiencing stock-outs of iron-folate tablets during the quarter	9,692	8,655	13,140	3,441	3,441	5,104		
			9,670,297	10,728,594	13,611,907	3,003,143	13,295,611		
24	TB: Case notification rate in new sputum smear positive pulmonary tuberculosis (TB) cases per 100,000 population in USG-supported areas	100	108	97	153	153	150	102	
			113	27	84	152	280	54	
25	TB: Number of multi-drug resistant (MDR) TB cases detected	113	27	84	41	152	280	54	
			113	27	84	152	280	54	

*Achievement rate is not applicable when target is 0.

Indicator	Definition	Baseline	TOTAL IHPplus			Achievement Rate (%)	
			PY1	PY2	PY3		
26 TB: Therapeutic success rate (new smear positive TB cases)	Numerator: Number of patients recovered plus number of patients with treatment completed	n/a	n/a	11,679	2,649	14,328	16,545
	Denominator: Number of new smear positive TB cases treated (1 year ago)	n/a	n/a	12,617	2,803	15,420	17,416
	Numerator/Denominator (in percentage)	n/a	n/a	93%	95%	93%	95%
27 TB: Therapeutic success rate for MDR-TB	Numerator: Number of MDR-TB patients recovered plus the number of MDR-TB patients with treatment completed	n/a	n/a	18	4	4	36
	Denominator: Number of MDR-TB patients for which a treatment has been initiated (1–2 years ago)	n/a	n/a	34	4	4	48
	Numerator/Denominator (in percentage)	n/a	n/a	53%	100%	100%	75%
28 TB: Percentage of HIV-positive patients screened for TB through USG-supported programs	Numerator: Number of HIV-positive patients screened for TB	n/a	n/a	8,321	2,976	11,297	TBD
	Denominator: Number of registered patients living with HIV	n/a	n/a	11,791	3,279	15,070	TBD
	Numerator/Denominator (in percentage)	n/a	n/a	71%	91%	75%	100%
29 TB: Percentage of TB cases detected among HIV-positive patients through USG-supported programs	Numerator: Number of TB cases detected among HIV-positive patients	n/a	n/a	776	220	996	TBD
	Denominator: Number of registered patients living with HIV	n/a	n/a	8,321	2,703	11,024	TBD
	Numerator/Denominator (in percentage)	n/a	n/a	9%	8%	9%	30%
30 TB: Percentage of HIV-positive patients without TB receiving INH prophylaxis	Numerator: Number of HIV-positive patients without TB receiving INH prophylaxis	n/a	n/a	3,938	1,434	5,372	TBD
	Denominator: Number of HIV-positive patients without TB	n/a	n/a	7,213	2,857	10,070	TBD
	Numerator/Denominator (in percentage)	n/a	n/a	55%	50%	53%	100%
31 HIV: Percentage of PEPFAR supported sites achieving 90% ART coverage for HIV-positive pregnant women	Numerator: Number of PEPFAR-supported sites achieving 90% ART or ART coverage for HIV-positive pregnant women	51	37	30	-	37	41
	Denominator: Total number of PEPFAR supported sites providing Prevention Mother to Child Transmission (PMTCT) services (HIV testing and counseling (HTC) and ARV or ART services)	69	40	32	-	40	45
	Numerator/Denominator (in percentage)	74%	93%	94%	-	93%	97%

*Achievement rate is not applicable when target is 0.

Indicator	Definition	Baseline	TOTAL IHPplus			PY3	PY2	PY1	IHPplus	Target	Achievement Rate (%)
			PY1	PY2	PY3						
32 HIV: Number and percentage of pregnant women with known status (women who were tested for HIV and received their results) (DSD)	Numerator: Number of pregnant women with known HIV status (includes women who were tested for HIV and received their results) Denominator: Number of new ANC and labor and delivery (L&D) clients	10,278	22,727	16,552	-	39,279	33,396	-	-	-	
			24,195	17,403	-	41,598	35,194				
33 HIV: Percentage of HIV-positive pregnant women who received antiretrovirals to reduce risk for mother-to-child-transmission (MTCT) during pregnancy and delivery (DSD)	Numerator/Denominator (in percentage) Numerator: Number of HIV-positive pregnant women who received antiretrovirals to reduce risk for mother-to-child-transmission (MTCT) during pregnancy and delivery Denominator: Number of HIV-positive pregnant women identified in the reporting period (including know HIV-positive at entry)	76%	94%	95%	-	94%	97%	-	-	97%	
			313	335	-	648	492				
34 HIV: Number of individuals who received Testing and Counseling (T&C) services for HIV and received their test results (DSD)	Numerator/Denominator (in percentage) Number of individuals who received Testing and Counseling (T&C) services for HIV and received their test results during the reporting period	21,357	45,098	43,724	-	88,822	63,327	-	-	103	
			4,610	4,722	-	4,722	3,086				
35 HIV: Number of HIV-positive adults and children who received at least one of the following during the reporting period: clinical assessment (WHO staging) OR CD4 count OR viral load (DSD)	Number of HIV-positive adults and children (aggregated by age/sex: female, male, <15 and >15 years) who received at least one of the following in the reporting period: clinical assessment (WHO staging) OR CD4 count OR viral load (DSD)	1,088	13,708	n/a	-	13,708	10,800	-	-	153	
			3,502	1,968	-	6,091	3,745				
36 HIV: Number of HIV-positive adults and children who received at least one of the following during the reporting period: clinical assessment (WHO staging) OR CD4 count OR viral load (DSD)	Number of HIV-positive adults and children (aggregated by age/sex: female, male, <15 and >15 years) in the reporting receiving a minimum of one clinical service (DSD)	584	2,264	4,722	-	6,986	5,350	-	-	127	
			1,157	4,722	-	6,986	5,350				
37 TB/HIV: Percentage of HIV-positive patients who were screened for TB in HIV care or treatment setting	Numerator: Number of HIV-positive patients who were screened for TB in HIV care or treatment setting Denominator: Number of HIV-positive patients in USG-supported HIV care or treatment setting	1,157	87%	87%	-	87%	70%	-	-	125	
			50%	87%	-	87%	70%				
38 HIV: Number of HIV-infected adults and children receiving antiretroviral therapy during the reporting period (current) DSD	Numerator/Denominator (in percentage) Number of HIV-infected adults and children receiving antiretroviral therapy during the reporting period (current) DSD	2,850	3,534	4,607	-	4,607	3,086	-	-	149	
			3,534	4,607	-	4,607	3,086				

*Achievement rate is not applicable when target is 0.

Indicator	Definition	Baseline	TOTAL IHPplus			Achievement Rate (%)
			PY1	PY2	PY3	
39 HIV: Number of HIV-infected adults and children newly enrolled in clinical care during the reporting period who received at least one of the following at enrollment: clinical assessment (WHO staging) OR CD4 count OR CD4 count OR viral load	Number of HIV-infected adults and children newly enrolled in clinical care (aggregated by age/sex: female, male, <15 and >15) during the reporting period and received at least one of the following at enrollment: clinical assessment (WHO staging) OR CD4 count OR viral load	350	1,882	831	2,713	140
40 HIV/TB: Proportion of registered TB cases who are HIV-positive who are on ART	Numerator: The number of registered TB cases with documented HIV-positive status who start or continue ART during the reporting period Denominator: The number of registered TB cases with documented HIV-positive status during the reporting period Numerator/Denominator (in percentage)	180	1,240	162	1,402	803
41 HIV: Percentage of laboratories and POC testing sites that perform HIV diagnostic testing that participate and successfully pass in an analyte-specific proficiency testing (PT) program	Numerator: Number of PEPFAR-supported laboratories and testing sites that participate and perform analyte-specific testing on HIV serologic/diagnostic testing, CD4, EID and TB diagnostic Denominator: Total number of laboratories and testing sites Numerator/Denominator (in percentage)	20	55	55	55	55
42 HIV: Family Planning and HIV Integration: Number of supported HIV service delivery point that are directly provide integrated voluntary family planning service	Number of supported HIV service delivery points that are directly provide integrated voluntary family planning service Numerator/Denominator (in percentage)	68	45	55	55	55
43 PMTCT_CTX: Number of infants born to HIV-positive women who were started on Cotrimoxazole (CTX) prophylaxis within two months of birth at USG-supported sites within the reporting period	CTX prophylaxis is a simple and cost-effective intervention to prevent Pneumocystis pneumonia (PCP) among HIV-exposed and -infected infants. PCP is the leading cause of serious respiratory disease among young HIV-infected infants in resource-limited countries and often occurs before HIV infection can be diagnosed. The indicator is the sum of infants having received CTX within 2 months of birth during the reporting period at PEPFAR-supported facilities.	29%	122%	100%	100%	100
44 PMTCT_EID: Number of infants who had a virologic HIV test within 12 months of birth during the reporting period	This indicator measures the extent to which infants born to HIV-positive women receive virologic testing to determine their HIV status within the first 12 months of life	68	72	44	72	72
		n/a	239	188	427	442
		n/a	129	188	317	268
						118

*Achievement rate is not applicable when target is 0.

Indicator	Definition	Baseline	TOTAL IHPplus			IHPplus	Target	Achievement Rate (%)
			PY1	PY2	PY3			
45 PMTCT_FO: Number of HIV exposed infants with a documented outcome by 18 months of age disaggregated by outcome type	In settings where national guidelines support breastfeeding of HIV-exposed infants, antibody testing of all HIV-exposed children at 18 months of age and/or 6 weeks after cessation of breastfeeding is recommended to determine final HIV status ('final outcome'/FO) of HIV-exposed children. In settings where national guidelines recommend HIV-antibody testing at 18 months of life, this indicator measures progress toward ensuring that all infants born to HIV-positive women have an outcome documented.	n/a	5	58		63	234	27
46 Tx_NEW: Number of adults and children newly enrolled on ART	The indicator measures the ongoing scale up and uptake of ART programs. The numerator can be generated by counting the number of adults and children who are newly enrolled in ART in the reporting period, in accordance with the nationally approved treatment protocol (or WHO/JUNAIDS standards).	n/a	1,312	2,201		3,513	1,767	199
47 Tx_VIRAL: Number of adults and pediatric ART patients with a viral load result documented in the patient medical record within the past 12 months	This indicator monitors the proportion of adult and pediatric patients on ART who have received a viral load test within the recommended testing interval (i.e., 12 months)	n/a	n/a	995		995	4,169	24
48 Tx_UNDETECT: Number of viral load tests from adult and pediatric ART patients conducted in the past 12 months with a viral load inferior to 1,000 copies/ml.	ART is viewed by the scientific community and PEPFAR not only as essential for decreasing morbidity and mortality, but also as a highly effective approach to prevent HIV transmission. This indicator monitors the proportion of viral load tests from adult and pediatric ART patients with an undetectable results (<1,000 copies/ml), allowing ART programs to evaluate to what degree they are improving the clinical outcomes of patients in care.	n/a	n/a	283		283	2,755	10
49 Tx_RET: Number of adults and children who are still alive and on treatment at 12 months after initiating ART	The indicator measures the proportion of individuals who have retained on antiretroviral therapy (ART). Death and loss to follow-up are the two highest causes of patient attrition from ART, especially in the first few months after initiating on ART. High retention is one important measure of program success, specifically in reducing morbidity and mortality, and is a proxy for overall quality of the ART program.	n/a	n/a	n/a		n/a	3,236	n/a

*Achievement rate is not applicable when target is 0.

Indicator	Definition	Baseline	TOTAL IHPplus			Achievement Rate (%)	
			PY1	PY2	PY3		IHPplus
50 CARE_COM: Number of HIV infected adults and children receiving care and support services outside of the health facility	The purpose of this indicator is to determine how many PLHIV receive care and support services outside of the health facilities where they are registered for HIV care and treatment. Data collected through this indicator will inform PEPFAR country programs about the scale-up and coverage of community care services.	n/a	n/a	1,897	1,897	752	252
51 TB/HIV_TB outcome: Aggregated outcome of TB treatment among registered new and relapsed TB cases who are HIV-positive in the treatment cohort	This indicator measures the aggregated outcomes of TB treatment among registered new and relapsed TB cases who are HIV-positive in the treatment cohort	n/a	77	182	259	180	144
IR 1: Access to and availability of Minimum Package of Activities (MPA) and Complementary Package of Activities (CPA) services and products in target health zones increased							
IR 1.1: Facility-based health care services and products (provincial hospitals and health zone health centers) in target health zones increased							
52 ***L+M+G: Percent general reference hospitals (GRHs) implementing complementary package of activities (CPA)	Numerator: Number of GRHs implementing CPA Denominator: Total number of GRHs	69	70	72	73	73	71
53 ***L+M+G: Percent of health centers implementing minimum package of activities (MPA)	Numerator: Number of health centers implementing MPA Denominator: Total percent of health centers	78	78	78	78	78	78
54 MALARIA: Percent of pregnant women who received at least two doses of SP for Intermittent Preventive Treatment (IPT) during ANC visits	Numerator: Number of health centers implementing MPA Denominator: Total percent of health centers	88%	90%	92%	94%	94%	103
	Numerator: Total number of health centers implementing MPA Denominator: Total percent of health centers	1,382	1,382	1,395	1,395	1,395	1,398
	Numerator: Total percent of health centers Denominator: Denominator (in percentage)	1,398	1,398	1,398	1,398	1,398	1,398
	Numerator: Number of pregnant women who received at least three doses of SP for IPT during ANC visits Denominator: Total number of pregnant women attending ANC visits in the reporting period (12 months)	99%	99%	100%	100%	100%	100
	Numerator: Number of pregnant women who received at least three doses of SP for IPT during ANC visits Denominator: Total number of pregnant women attending ANC visits in the reporting period (12 months)	255,509	292,105	558,789	n/a	850,894	759,795
	Numerator: Denominator (in percentage) Numerator: Number of pregnant women who received at least three doses of SP for IPT during ANC visits Denominator: Total number of pregnant women attending ANC visits in the reporting period (12 months)	386,812	398,416	614,644	n/a	1,013,060	1,013,060
	Numerator: Denominator (in percentage) Numerator: Number of pregnant women who received at least three doses of SP for IPT during ANC visits Denominator: Total number of pregnant women attending ANC visits in the reporting period (12 months)	66%	73%	91%	n/a	84%	112
55 MALARIA: Percent of pregnant women who received at least three doses of SP for Intermittent Preventive Treatment (IPT) during ANC visits	Numerator: Number of pregnant women who received at least three doses of SP for IPT during ANC visits Denominator: Total number of pregnant women attending ANC visits in the reporting period (12 months)	n/a	n/a	n/a	381,111	420,856	
	Numerator: Total number of pregnant women attending ANC visits in the reporting period (12 months) Denominator: Denominator (in percentage)	n/a	n/a	n/a	841,712	841,712	
	Numerator: Denominator (in percentage)	n/a	n/a	n/a	45%	50%	91

*Achievement rate is not applicable when target is 0.

Indicator	Definition	Baseline	TOTAL IHPplus			Achievement Rate (%)			
			PY1	PY2	PY3		IHPplus	Target	
56	MALARIA: Number of USG-supported service delivery points experiencing stock-outs of Artemisinin based combination therapy (ACT) for 1 – 5 year olds	80	351	314	465	465	100	22	
57	MALARIA: Number of health workers trained in IPTp with USG funds (disaggregated by gender)	0	1,231	1,043	0	2,274	2,798	81	
		0	1,000	858	0	1,858	1,851		
		0	231	185	0	231	947		
58	MALARIA: Number of health workers trained in case management with ACTs with USG funds (disaggregated in 2 sub-categories and by gender)	0	1,231	1,043	0	2,274	2,798	81	
	(a) Number of health facility workers trained (male/female)	0	1,000	858	0	1,858	1,851		
	(b) Number of community-level workers trained (male/female)	0	231	185	0	231	947		
		0	0	0	0	0	5		
		0	0	0	0	0	6		
59	MALARIA: Number of health workers trained in malaria laboratory diagnostics (Rapid Diagnosis Tests (RDT) or microscopy) with USG funds (disaggregated in 3 sub-categories and by gender)	0	1,231	1,043	0	2,274	2,798	81	
	(a) Number of health facility workers trained (male/female)	0	1,000	858	0	1,858	1,851		
	(b) Number of community-level workers trained (male/female)	0	231	185	0	231	947		
	(c) Number of laboratory workers trained (male/female)	0	0	0	0	0	14		
		0	0	0	0	0	15		
		0	0	0	0	0	16		
		0	0	0	0	0	17		
IR 1.2: Community-based health care services and products in target health zones increased									
60	**L+M+G: Percent of communities with CODESAs actively involved in management of priority health services	1,282	1,280	1,323	1,233	1,233	1,284		
	Numerator: Number of communities with CODESAs with active involvement in management of priority health services for their communities								
	Denominator: Total number of communities in IHPplus target area	1,398	1,398	1,398	1,398	1,398	1,398		
	Numerator/Denominator (in percentage)	92%	92%	95%	88%	88%	92%	96	

* Achievement rate is not applicable when target is 0.
*** ?/??/?

Indicator	Definition	Baseline	TOTAL IHPplus			Achievement Rate (%)		
			PY1	PY2	PY3		IHPplus	Target
61	WASH: Number of people gaining access to an improved drinking water source as a result of USG support	35,441	228,314	260,178	25,000	513,492	617,126	93
62	WASH: Percent of the population using an improved drinking water source as a result of USG support	n/a					TBD	n/a**
63	WASH: Number of people gaining access to an improved sanitation facility as a result of USG support	21,318	167,108	176,703	23,159	366,970	524,768	70
64	WASH: Percent of the population using an improved sanitation facility as a result of USG support	n/a					TBD	n/a**
IR 1.3: Provincial management more effectively engaged with health zones and facilities to improve service delivery								
65	*** L+M+G: Percent of senior Leadership Development Program (LDP) teams that have achieved at least 80% of their desired performance according to indicators in their action plans within six months of completing the LDP. LDP team are made up of senior health managers working towards improving organizational performance and service delivery of health zones and facilities in their respective health zones/areas	46	48	49	43	47	n/a	
IR 2: Quality of key family health care services (MPA/CPA) in target health zones increased (Component 1)								
IR 2.1: Clinical and managerial capacity of health care providers increased								

* Achievement rate is not applicable when target is 0.

Indicator	Definition	Baseline	PY			IHPplus	Target	Achievement Rate (%)
			PY1	PY2	PY3			
66 ***L+M+G: Percent of health zones with validated action plans	Numerator: Number health zones with validated actions plans	53	61	69	69	69	78	
	Denominator: Total number health zones in IHPplus target areas	78	78	78	78	78	78	
	Numerator/Denominator (in percentage)	68%	78%	88%	88%	88%	100%	88
67 ***L+M+G: Percent of health centers with accurate and up-to-date inventory records	Numerator: Number of health centers with up-to-date and accurate record of inventory of essential drugs and supplies ("accurate" means that the records correctly reflect the inventory of essential drugs and supplies that are currently in stock)	1,058	1,238	1,343	1,024	1,024	n/a	
	Denominator: Total number of health centers in IHPplus areas	1,398	1,398	1,398	1,398	1,398	n/a	
	Numerator/Denominator (in percentage)	76%	89%	96%	73%	73%	97%	76
68 ***L+M+G: Percent of hospitals with accurate and up-to-date inventory records	Numerator: Number of hospitals with up-to-date and accurate record of inventory of essential drugs and supplies ("accurate" means that the records correctly reflect the inventory of essential drugs and supplies that are currently in-stock)	64	71	75	75	75	n/a	
	Denominator: Total number of hospitals in IHPplus areas	78	78	78	78	78	n/a	
	Numerator/Denominator (in percentage)	82%	91%	96%	96%	96%	100%	96
69 GENDER: Number of people reached by a USG-supported intervention providing GBV services (e.g., health, legal, psycho-social counseling, shelters, hotlines, other)	Number of people reached by a USG-supported intervention providing GBV health services	1,937	2,526	3,591	4,207	10,324	7,250	142
70 GENDER: Number of BCC campaigns launched delivering key health messages targeting women and girls as primary audience	Number of BCC campaigns developed and launched with key prevention priority messages for FP, nutrition, malaria, and WASH within the IHPplus target areas	5	85	44	10	139	32	434
IR 2.2: Minimum quality standards for health facilities (general referral hospitals and health zone health centers) and services developed and adopted								
71 *L+M+G: Percent of health facilities that completed an evaluation of the nine FOSACOF minimum standards	Numerator: Number of health centers and GRH that completed an evaluation of the nine FOSACOF minimum standards	n/a	419	432	374	374	583	
	Denominator: Total number of health facilities implementing the FOSACOF approach	n/a	737	807	839	839	737	
	Numerator/Denominator (in percentage)	n/a	57%	54%	45%	45%	79%	56

*Achievement rate is not applicable when target is 0.

Indicator	Definition	Baseline	PY			PY3	TOTAL IHPplus		
			PY1	PY2	PY3		IHPplus	Target	Achievement Rate (%)
71.1	*L+M+G: Percent of health centers meeting that completed an evaluation of the nine FOSACOF minimum standards	332	400	415	352	352	545		
	Denominator: Total number of health centers implementing the FOSACOF approach	312	699	767	799	799	699		
	Numerator/Denominator (in percentage)	106%	57%	54%	44%	44%	78%	52	
71.2	*L+M+G: Percent of general reference hospital that completed an evaluation of the nine FOSACOF minimum standards	37	19	17	22	22	40		
	Denominator: Total number of GRH integrating the FOSACOF approach	455	38	40	40	40	40		
	Numerator/Denominator (in percentage)	8%	50%	43%	55%	55%	100%	55	
IR 2.3: Referral system for primary health care prevention, care, and treatment between community structures and health zone health facilities institutionalized									
72	Percent of patients referred to health centers by a CHW, disaggregated by gender, and age groups (< 5 years; 5–14 years; > 15 years)	17,204	21,080	60,240	18,840	100,160	9,830		
	Denominator: Total number of patients seen by a CHW	111,776	162,547	262,621	174,308	599,476	65,532		
	Numerator/Denominator (in percentage)	15%	13%	23%	11%	17%	15%	111	
73	Percent of patients referred to GRHs by a CHW or health care provider, disaggregated by gender, and age groups (< 5 years; 5–14 years; > 15 years)	174,245	177,538	247,803	228,603	653,944	77,877		
	Denominator: Total number of patients seen by a CHW or health care provider	4,474,662	4,654,045	5,888,502	5,415,520	15,958,067	1,557,537		
	Numerator/Denominator (in percentage)	4%	4%	4%	4%	4%	5%	82	
IR 3: Knowledge, attitudes, and practices to support health-seeking behaviors increased in target health zones (Component 1)									
IR 3.1: Evidence-based health sector-community outreach linkages—especially for women, youth, and vulnerable populations—established									
74	***L+M+G: Percent of NGOs representing women, youth and vulnerable groups participating in coordination meetings	146	332	199	159	159	124		
	Denominator: Number of NGOs representing women, youth and vulnerable groups registered in DRC	212	445	357	190	190	207		
	Numerator/Denominator (in percentage)	69%	75%	56%	84%	84%	60%	139	

*Achievement rate is not applicable when target is 0.

Indicator	Definition	Baseline	PY			IHPplus	Target	Achievement Rate (%)
			PY1	PY2	PY3			
75 ***L+M+G: Number Community Champions achieving the deliverables set in their signed fixed amount awards (FAAs)	Number community Champions achieving the deliverables set in their signed fixed amount awards (FAAs)	33	n/a	n/a	64	64	36	177
76 ***L+M+G: Number youth organizations participating in youth education outreach strategy	Number youth organizations conducting member outreach and health education as part of IHPplus youth health education strategy	146	180	199	159	159	126	126
IR 3.3: Behavior change campaigns involving opinion leaders and cultural influencers (people and technologies) launched								
77 BCC: Number of CODESAs supported by IHPplus which have a "communications action plan"	Number of CODESAs supported by IHPplus within the IHPplus target areas which have a "communications action plan" developed	1,192	1,225	1,251	1,160	3,636	1,284	283
78 BCC: Number of educational SMS messages during BCC campaigns or mini-campaigns on malaria, nutrition, FP, WASH, etc.	Key messages targeted to select groups (mothers, caretakers, partners, etc.) sent via SMS in FP, nutrition, malaria, WASH, etc., within the IHPplus target areas (annual targets will be based on pilot studies in PY2 as included in the workplan)	500,000	510,168	835,081	38,512	1,383,761	1,134,000	122
IR 4: Health sector leadership and governance in target provinces improved (Component 2)								
IR 4.1: Provincial health sector policies and national level policies aligned								
79 ***L+M+G: Percent of health zones with an annual operational plan based on National Development Plan ("PNDS")	Numerator: Number of health zones with an annual operational plan based on National Development Plan ("PNDS")	78	61	69	69	69	n/a	
	Denominator: Total number of health zones	78	78	78	78	78	n/a	
80 ***L+M+G: Percent of health zone management teams with a performance management system that includes essential components	Numerator/Denominator (in percentage)	100%	78%	88%	88%	88%	100%	88
	Numerator: Number of health zone management teams with a performance management system that includes any of the three essential components: 1) <i>Up-to-date job descriptions and organigrams,</i> 2) <i>Work plans (including supervision plan and guide)</i> 3) <i>Performance review reports</i>	48	60	78	65	65	n/a	
Project Management	Denominator: Total number of health zones	78	78	78	78	78	n/a	
	Numerator/Denominator (in percentage)	62%	77%	100%	83%	83%	100%	83
81 PM: Number of success stories developed	Number of success stories developed disaggregated by technical components and sub-components where applicable (HIV/AIDS, TB, malaria, MNCH, FP/RH, nutrition, WASH, GBV, gender, HSS, BCC, commodities, coordination, M&E, etc.)	23	26	36	24	86	80	108

*Achievement rate is not applicable when target is 0.

Appendix 2. List of all Health Zones

PROVINCE	HEALTH ZONES					
	Received IHPplus Support for MNCH, FP, Malaria, TB, WASH, and Nutrition	Population 2018	Received IHPplus Support for Malaria (GFATM et al.)*	Population 2018	Received IHPplus Support for Malaria (PMI Expansion)**	Population 2018
Haut Lomami	Kinkondja	274,462	Bukama	350,749		
	Kabongo	400,469	Kamina	324,087		
	Kayamba	108,349	Kabondo Dianda	533,570		
	Kitenge	281,111	Butumba	283,715		
	Songa	188,265	Baka	74,219		
	Lwamba	131,798	Kaniama	386,447		
	Malemba Nkulu	296,748	Kinda	89,460		
	Mukanga	229,613				
	Mulongo	331,765				
		9	2,242,580	7	2,042,247	0
Lualaba	Dilala	129,460	Dilolo	171,867		
	Bunkeya	56,644	Kafakumba	134,727		
	Fungurume	120,598	Kalamba	102,684		
	Lubudi	132,305	Kapanga	182,349		
	Manika	245,342	Kasaji	279,785		
	Kanzenze	101,513	Sandoa	236,973		
	Mutshatsha	77,001				
	Lualaba	108,367				
	8	971,229	6	1,108,385	0	
Kasai Oriental	Bibanga	166,438	Kasansa	251,115	Bipemba	407,828
	Dibindi	293,640	Chilundu	212,836	Bonzola	195,629
	Mpokolo	339,297	Miabi	188,556	Citenge	261,793
			Kabeya Kamuanga	159,449	Diulu	403,984
			Tshilenge	328,284	Kansele	282,365
					Lubilanji	270,925
					Lukalenge	221,858
					Mukumbi	160,340
					Muya	362,181
					Nzaba	325,646
					Tshishimbi	216,802
	3	632,937	5	889,125	11	2,701,523
Kasai	Dekese	157,024				
		1	157,024	0	0	

* Health zones inherited from the GFATM and SIAPS/MalariaCare/Deliver in 2016

** Health zones inherited from the PMI Expansion in January 2018

PROVINCE	HEALTH ZONES					
	Received IHPplus Support for MNCH, FP, Malaria, TB, WASH, and Nutrition	Population 2018	Received IHPplus Support for Malaria (GFATM et al.)*	Population 2018	Received IHPplus Support for Malaria (PMI Expansion)**	Population 2018
Haut Katanga			Kambove	150,485	Mitwaba	126,524
			Kikula	260,227	Mufunga Sampwe	190,440
			Kilela Balanda	74,765		
			Likasi	155,219		
			Panda	92,720		
			Kafubu	110,966		
			Kamalondo	33,936		
			Kampemba	520,708		
			Kasenga	162,420		
			Kashobwe	167,468		
			Mumbunda	415,459		
			Pweto	387,356		
			Rwashi	438,115		
			Sakania	328,781		
			Tshamilemba	298,966		
			Vangu	202,939		
			Katuba	208,766		
			Kenya	276,932		
			Kilwa	353,697		
			Kipushi	232,378		
			Kisanga	366,309		
			Kowe	58,448		
			Kapolowe	164,243		
			Lubumbashi	255,671		
			Lukafu	108,028		
	0		25	5,825,000	2	316,964
Lomami	Kamiji	110,070	Kabinda	303,362	Gandajika	335,091
	Kalenda	233,392			Kalambayi Kabanga	175,084
	Luputa	320,087			Kalonda-Est	251,100
	Wikong	133,885			Kamana	205,126
	Kanda Kanda	258,259			Lubao	228,716
	Mwene Ditu	468,361			Ludimbi Lukula	168,292
					Mulumba	343,754
					Tshofa	151,974
				Makota	255,706	
	6	1,524,056	1	303,362	9	1,779,752

* Health zones inherited from the GFATM and SIAPS/MalariaCare/Deliver in 2016

** Health zones inherited from the PMI Expansion in January 2018

PROVINCE	HEALTH ZONES					
	Received IHPplus Support for MNCH, FP, Malaria, TB, WASH, and Nutrition	Population 2018	Received IHPplus Support for Malaria (GFATM et al.)*	Population 2018	Received IHPplus Support for Malaria (PMI Expansion)**	Population 2018
Sankuru	Lusambo	107,316				
	Pania Mutombo	87,308				
	Djalo Djeka	87,450				
	Katako Kombe	146,960				
	Wembo Nyama	92,054				
	Dikungu	158,167				
	Tshumbe	108,802				
	Minga	178,418				
	Ototo	144,674				
	Omendjadi	145,746				
	Vangakete	138,651				
	Lodja	206,568				
	Bena Dibele	105,037				
	Kole	105,840				
	Tshudi Loto	124,145				
	Lomela	81,255				
		16	2,018,389	0		0
Kasai Central	Dibaya	153,376	Bunkonde	121,965	Bena-leka	318,825
	Lubombaie	172,534	Mikalayi	246,474	Bena Tshiadi	126,382
	Bilomba	97,092	Bobozo	44,784	Demba	384,772
	Kalomba	162,036			Kananga	307,214
	Ndekesha	171,919			Katende	105,577
	Yangala	172,267			Katoka	238,311
	Luambo	301,736			Lubunga	214,187
	Luiza	184,707			Lukonga	400,987
					Muetshi	226,345
					Mutoto	242,322
					Ndesha	215,894
					Tshikula	216,596
					Masuika	320,633
					Tshibala	369,882
		8	658,710	3	14	2,445,157

* Health zones inherited from the GFATM and SIAPS/MalariaCare/Deliver in 2016

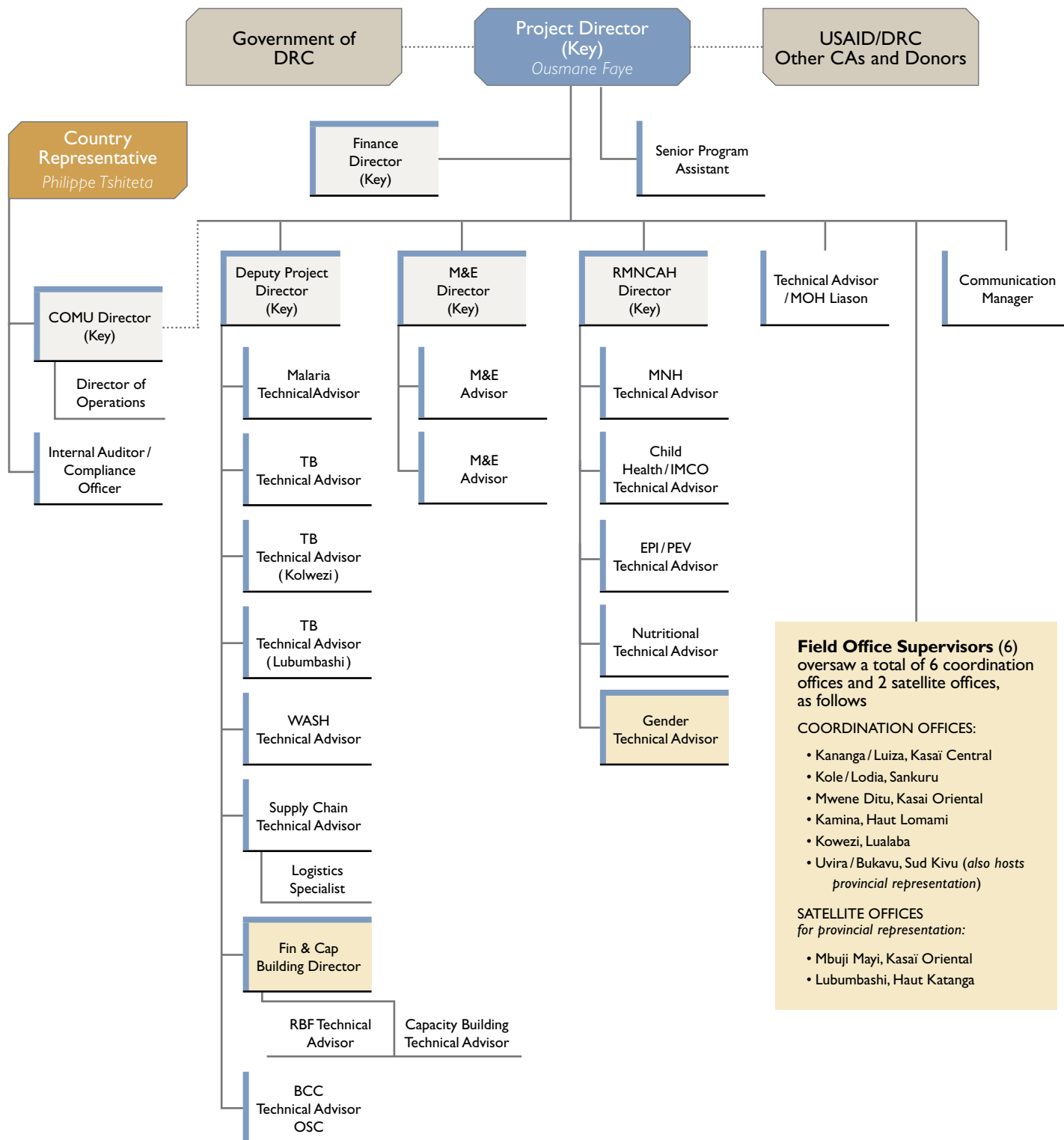
** Health zones inherited from the PMI Expansion in January 2018

PROVINCE	HEALTH ZONES					
	Received IHPplus Support for MNCH, FP, Malaria, TB, WASH, and Nutrition	Population 2018	Received IHPplus Support for Malaria (GFATM et al.)*	Population 2018	Received IHPplus Support for Malaria (PMI Expansion)**	Population 2018
Sud Kivu	Ibanda	345,494	Kalehe	181,415	Kabare	113,877
	Bagira	106,539			Nyantende	136,096
	Kadutu	217,489			Fizi	315,376
	Idjwi	265,262			Itombwe	98,946
	Katana	218,550			Kimbi Lulenge	184,397
	Miti-Murhesa	223,570			Minembwe	88,733
	Bunyakiri	165,226				
	Kalonge	199,254				
	Minova	213,886				
	Kamituga	171,658				
	Kitutu	143,146				
	Mwana	144,269				
	Mwenga	149,907				
	Kalole	113,079				
	Lulingu	172,772				
	Mulungu	151,308				
	Shabunda	156,103				
	Kaniola	190,697				
	Kaziba	129,214				
	Mubumbano	185,863				
	Nyangezi	137,113				
	Walungu	273,877				
	Nundu	266,818				
	Haut-Plateau	125,912				
	Lemera	170,826				
	Ruzizi	157,689				
	Uvira	303,623				
	27	5,099,142	1	181,415	6	937,425
TOTAL	78	13,304,066	48	10,349,534	42	8,180,821

* Health zones inherited from the GFATM and SIAPS/MalariaCare/Deliver in 2016

** Health zones inherited from the PMI Expansion in January 2018

Appendix 3. Organizational Structure of Kinshasa Office Headquarters



Appendix 4. Publications and Presentations PY1–PY3

Date	Title	Event *	Type	Location*	Link
2015					
14–15 Dec	Motivating village health development committees with incentives based on performance to improve service utilization rates in DRC	8th Annual Conference on the Science of Dissemination and Implementation	Abstract (created under IHP) Poster	Washington, DC, USA	https://drive.google.com/open?id=1vYgYSX7ZDKiLR-GLtViEoIYpffrH3TiK
2016					
8–10 Feb	The Contribution of the Champion Communities Approach to Healthy Behaviors and the Utilization of Health Services in the DRC	International SBCC Summit 2016	Abstract (created under IHP) Poster	Addis Ababa, Ethiopia	https://drive.google.com/open?id=1JGs9-EjeiWennrn-mWy2_utlPjXFepkQQ
16–17 Apr	Saving Lives and Improving Health in the Democratic Republic of Congo: A Health Systems Approach to Saving Mothers and Neonates	Global Health and Innovation Conference (GHIC)	Abstract (created under IHP) Poster	New Haven, CT USA	https://drive.google.com/open?id=1FzeBtXdzYiZO-O3wNdfqh0a-K6Qmi5bDZ
16–17 Apr	Breathing Easier in DRC: Simple Technology Saves Newborn Lives	GHIC	Abstract (created under IHP) Poster	New Haven, CT USA	https://drive.google.com/open?id=0Bzb5aEGf5H-bcTHZVZ1JTa283NW8 https://drive.google.com/open?id=12Ef-NZW9FGc77ZUsRD-4Qv0n6UPnP-6oUa
26–29 Sep	<i>Les facteurs déterminants de la satisfaction des usagers des services de santé dans la zone de santé de Luiza au Kasai Occidental en RDC</i>	African Health and Economics Policy Association Fourth Biennial Scientific Conference	Abstract Presentation	Rabat, Morocco	https://drive.google.com/file/d/1FzeBtXdzYiZO-O3wNdfqh0a-K6Qmi5bDZ/view?usp=sharing
26–29 Sep	The Contribution of the Champion Communities Approach to Healthy Behaviors and the Utilization of Health Services in the DRC	Roll Back Malaria Communication Community of Practice Annual (RBM CCoP) Meeting	Abstract (created under IHP) Presentation	Dakar, Senegal	https://drive.google.com/open?id=1JGs9-EjeiWennrn-mWy2_utlPjXFepkQQ
29 Oct–2 Nov	Balanced and nutritious complementary feeding of children from 6–24 months old: Promoting children's consumption of animal products in the DRC	American Public Health Association (APHA) Annual Meeting 2016	Abstract Presentation	Denver, CO USA	https://drive.google.com/open?id=127cnuQbkAK-0grn0cmmMdXRRK13iKX-HkL
29 Oct–2 Nov	High-impact malaria interventions save children's lives in the DRC	APHA Annual Meeting 2016	Abstract Presentation	Denver, CO USA	https://drive.google.com/open?id=11wXUeYrA-MYrpE6jvQsekVV2DR1d3h_ng
29 Oct–2 Nov	Can RBF significantly improve the quality of health services? The case of health facilities in the DRC	APHA Annual Meeting 2016	Abstract Presentation	Denver, CO USA	https://drive.google.com/open?id=128Htm7zAyM-blrnOMOCfMO9zQVG7n4_m8
29 Oct–2 Nov	Community-Led Total Sanitation: A pilot approach in nine health zones in the DRC	APHA Annual Meeting 2016	Abstract Poster	Denver, CO USA	https://drive.google.com/open?id=0Bzb5aEGf5HbcM-3d1R0dKUF9aUmM
14–18 Nov	<i>L'amélioration de l'utilisation des services de la santé de la mère et de l'enfant par le Financement Basé sur les Résultats en RDC</i>	Fourth Global Symposium on Health Systems Research	Abstract	Vancouver, Canada	https://drive.google.com/open?id=1nEftmdHgAvqniX-akXwKRuFHc_J0skZ8f

* where applicable

Date	Title	Event *	Type	Location*	Link
14–18 Nov	Testing of Quality of Care Indicators for Maternal and Neonatal Health Services in Eight Health Zones in the Democratic Republic of Congo	Fourth Global Symposium on Health Systems Research	Roundtable discussion	Vancouver, Canada	https://drive.google.com/open?id=1EbKCRpq8A3k-KDGu5Ny4vhOoAeP6Rc_Vs
14–18 Nov	Saving Lives and Improving Health in the Democratic Republic of Congo: A Health Systems Approach to Saving Mothers and Neonates	Fourth Global Symposium on Health Systems Research	Abstract (created under IHP) Poster	Vancouver, Canada	https://drive.google.com/open?id=1FzeBtXdzYiZO-O3wNdfqh0a-K6Qmi5bDZ
2017					
8–11 Jul	The effect of RBF on the quantity of maternal and child health services and health governance in the DRC	International Health Economics Association (iHEA) Biennial Congress	Abstract Presentation	Boston, MA USA	https://drive.google.com/open?id=1FKXkeXUpwZHP-CyNuUTMXblrsGnsBRfkS
8–11 Jul	The effects of RBF on the quality of services and the accuracy of reported health information in the DRC	iHEA Biennial Congress	Abstract Presentation	Boston, MA USA	https://drive.google.com/open?id=1O2NkUecoE7hk-KydQ4H_cygnDwBW_Tf_1
23–26 Jul	Therapeutic Outcomes of TB-HIV Co-Infected Patients in the Lualaba Mining Province in the DRC	9th Annual International AIDS Society Conference on HIV Science	Abstract Poster	Paris, France	https://drive.google.com/open?id=19i9GJjzXJC-jQwyuXGp5665Go-QQekuZx9
26–28 Oct	<i>Evaluation de l'effet de la trithérapie anti-retrovirale sur la survie des patients VIH sous traitement et les facteurs associés : la cohorte de l'hôpital de la GECAMINE, ville de Kolwezi-République Démocratique du Congo</i>	<i>Vème Congrès de Pharmacoéconomie et Pharmacoépidémiologie de la Société Marocaine de l'Economie des Produits de Santé</i>	Abstract Poster	Casablanca, Morocco	https://drive.google.com/open?id=1CNctbtetqDQH-gEo0LWxU7uEbdCB8MRo6
4–8 Nov	Early Infant Diagnosis Saves Lives in Kolwezi, DRC	APHA Annual Meeting 2017	Abstract Presentation	Atlanta, GA USA	https://drive.google.com/open?id=11k2UMVU-oUgSVOix8kUdddojwjq-8GUteb
4–8 Nov	Impact of nutrition interventions on child survival in the DRC	APHA Annual Meeting 2017	Abstract Presentation	Atlanta, GA USA	https://drive.google.com/open?id=11TnlZdi82lkle-1ie8wuk2spUmiLKQYLU
4–8 Nov	Improving the proportion of HIV-positive patients treated with IPT in the Lualaba Province of the Democratic Republic of Congo	APHA Annual Meeting 2017	Abstract Poster	Atlanta, GA USA	https://drive.google.com/open?id=11ZRtia0bR7B-wuDxHFB4IZnxrrAkl2B4c
4–8 Nov	Therapeutic Outcomes of TB-HIV Co-Infected Patients in the Lualaba Mining Province in the DRC	APHA Annual Meeting 2017	Abstract Presentation	Atlanta, GA USA	https://drive.google.com/open?id=11blsB5FLE-zFr-Ni5cMkF49ERVR1hcXfj
6–Dec	Uniting to end violence against women and girls: 16 days of activism launched in DRC		Story	MSH Stories	http://www.msh.org/news-events/stories/uniting-to-end-violence-against-women-and-girls-16-days-of-activism-launched-in

* where applicable

Date	Title	Event *	Type	Location*	Link
2018					
22–23 Mar	Strengthening health data reporting by integrating national and project DHIS 2 instances: experience from the DRC	DHIS 2 Symposium	Abstract Presentation	Washington, DC USA	https://drive.google.com/open?id=11bYSmjPjh4c-clQFwNX-FULgJjrx6ESJ
Jul	Nutrition		Fact sheet		
Jul	MNCH		Fact sheet		
Jul	Tuberculosis		Fact sheet		
Jul	Malaria		Fact sheet		
Jul	Family planning		Fact sheet		
Jul	LDP		Fact sheet		
Jul	HIV/AIDS		Fact sheet		
Jul	<i>Le succes de la mise en oeuvre des approches Aider les meres a survivre et Aider les babes a respirer dans les zones de sante PROSANIplus</i>		Technical brief		
Jul	Strengthening health data reporting and improving data quality and use by integrating national and project DHIS 2 instances: experience from the DRC		Technical brief		
Jul	<i>La prise en charge simplifiée des nourrissons malades avec possibilité d'infection bactérienne grave</i>		Technical brief		
Jul	Reach Every Household with Family Planning: Door to door mini-campaigns promote contraceptive methods		Technical brief		
Jul	The Champion Community Approach in DRC: A Gold Standard for Community Mobilization		Technical brief		
Jul	Quality of Care Indicators for Maternal and Newborn Health: A Study in 8 Health Zones in the Democratic Republic of Congo		Technical brief		
Jul	The Champion Community Approach in Democratic Republic of Congo: The New Gold Standard for Community Mobilization		Video		
Jul	Champion Community Approach Implementation Manual, Democratic Republic of Congo		Manual		
12–15 Nov	Reach every household with family planning: Door-to-door mini-campaigns promote contraceptive methods in IHPplus-supported health zones in the Democratic Republic of Congo	ICFP: International Conference on Family Planning	Abstract Presentation (future, accepted)	Kigali, Rwanda	https://www.xcdsystem.com/icfp/abstract/invite.cfm?uid=361777&hid=7D69D876-92BF-1CA5-B1355B610F-1BCE96&aid=168801&-caid=2061&cid=1484

* where applicable

Appendix 5. List of Success Stories

Qtr	N°	Story Location	Health Topic	Title
PY1Q2	1	Kanzenze health zone, Lualaba province	RBF	If you can measure it, you can change it: Collecting reliable health data in DRC
	2	Mwene Ditu health zone, Lomami province	Access to Care	Renovate it and they will come: Raising utilization rates in Lukola
	3	Uvira health zone, Sud Kivu province	MNCH	Lowering maternal mortality one life at a time: Active management of the third stage of labor in DRC
	4	Mulongo health zone, Haut Lomami province	HIV	The medicines work: An HIV-positive woman regains her health and her life in DRC
	5	Kayamba health zone, Haut Lomami province	FOSACOF	In a nurse's words: How measurement inspired one health center to turn itself around
	6	Kanda Kanda health zone, Lomami province	Access to Care	Providing better services to more people: Upgrading a health center in DRC
	7	Lodja health zone, Sankuru province	Champion Community	Champion Communities: Changing the world, village by village
	8	Ndeksha health zone, Kasai Central province	Nutrition	Learn from the children: A young student helps her mother better nourish the family
	9	Dibaya health zone, Kasai Central province	Malaria	Neighborhood care for malaria and a new pre-referral treatment save lives in Dibaya
PY1Q3	10	Kamiji health zone, Lomami province	TB	Now I know my condition and I believe in a cure: Mama Bec's TB story
	11	Kanda Kanda health zone, Lomami province	WASH	Clean water is a community affair in Kabuela, DRC
	12	Ruzizi health zone, Sud Kivu province	Nutrition	It takes a support group and good information: Healthier children in DRC thanks to IYCF support groups
	13	Luiza health zone, Kasai Central province	RBF	Life will be radiant in this village: Health education at the hospital turns mother into hygiene activist
	14	Bibanga health zone, Kasai Oriental province	RBF	Results-based financing brings back the water — and patients
	15	Katana health zone, Sud Kivu province	FP	Spacing births for healthier lives: Health support groups bring family planning to rural areas of DRC
	16	Bilomba health zone, Kasai Central province	MNCH	Hands-on training empowers health providers to save the lives of mothers and newborns in the DRC
	17	Katana health zone, Sud Kivu province	BCC	A father takes his girls to school: The story of Jean Paul

Qtr	N°	Story Location	Health Topic	Title
PY1Q4	18	Fungurume health zone, Lualaba province	MNCH	“I didn’t even know how I got to the hospital”: Saved from eclampsia by skilled medical attention
	19	Luiza health zone, Kasai Central province	RBF	A clinic of our own:A health-facility team and CODESA make their dream a reality
	20	Bunkeya health zone, Lualaba province	HIV	Beating two major diseases thanks to upgraded, free health services:“I once again believe in my future and that of my children”
	21	Fungurume health zone, Lualaba province	MNCH	Simple techniques make (radio) waves in the DRC:A grateful mother broadcasts the message to others
	22	Luiza health zone, Kasai Central province	FP	Theory and practice:A family-planning “mini-campaign” inspires 1,000 couples to try modern contraception
	23	Malembea health zone, wHaut Lomami province	TB	For tuberculosis patients in rural DRC, fighting stigma is half the battle:A community-based organization seeks patients out so they can be treated
	24	Lomela health zone, Sankuru province	RBF	Community-based organizations check on the performance of health facilities, and also lend a hand, thanks to results-based financing
	25	Dibaya health zone, Kasai Central province	BCC	From shunning to solidarity: Helping young mothers in Dibaya
PY2Q1	26	Kole and Lodja health zones, Sankuru province Dibaya and Luiza health zones, Kasai Central province	BCC	Making health education accessible and fun: Health SMS texts and quiz games become popular in the DRC
	27	Dilala health zone, Lualaba province	HIV	Knowing your status:An HIV-positive couple gives life to an HIV-free child
	28	Lodja health zone, Sankuru province	Nutrition	Paying it forward:A mother counseled on breastfeeding becomes the counselor
	29	Mulongo health zone, Haut Lomami province	Access to Care	Saving people’s lives with education and affordable care
	30	Bibanga health zone, Kasai Oriental province	RBF	A healthy investment: Health center leaders take ownership of improving service quality
	31	Katana health zone, Sud Kivu province	FP	It’s all in the timing:Access and education help families plan for healthy babies
	32	Luiza health zone, Kasai Central province	RBF	Improving the quality of health services in Luiza through results-based financing
	33	Ndeksha health zone, Kasai Central province	WASH	WASH interventions reduce diarrhea cases in Ndeksha
	34	Lomela health zone, Sankuru province	Champion Community	Children in the Lomela Pilote health area benefit from strategic partnership
	35	Tshumbe health zone, Sankuru province	BCC	Behavior change communication mini-campaigns improve tuberculosis indicators

Qtr	N°	Story Location	Health Topic	Title
PY2Q2	36	Ndeksha health zone, Kasai Central province	WASH	Changing attitudes, improving lives: Latrines protect a family from typhoid
	37	Baka health zone, Haut Lomami province	TB	I would have died of ignorance: A TB survivor's story
	38	Mwene Ditu health zone, Kasai Oriental province	TB	Mass media and door-to-door campaigns increase the detection of tuberculosis in Mwene Ditu
	39	Kanda Kanda health zone, Kasai Oriental province	Nutrition	Support groups improve infant nutrition in Kanda Kanda, DRC
	40	Lubudi health zone, Lualaba province	HIV	Speaking against the silence: HIV-positive women in Lubudi find their voices
	41	Kitutu health zone, Sud Kivu province	i-CCM	It takes a village... to raise a new community care site
	42	Kitenge health zone, Haut Lomami province	i-CCM	In Kitenge, DRC, a chief's grandson is saved
	43	Nundu health zone, Sud Kivu province	FP	A family in Sud Kivu thrives, thanks to family planning
	44	Songa health zone, Haut Lomami province	Champion Community	The innovative integration of youth into Champion Communities improves community health
PY2Q3	45	Kaniola health zone, Sud Kivu province	TB	Tuberculosis steals a man's wealth — but community referral and treatment restore his health
	46	Walungu health zone, Sud Kivu province	WASH	The 'water glass test' challenges traditional attitudes to improve hygiene practices
	47	Mwene Ditu and Kanda Kanda health zones, Lomami province	i-CCM	"On World Pneumonia Day, mini-campaigns encourage parents to seek screening and treatment for their children"
	48	Luambo health zone, Kasai Central province	MNCH	On the border, a life is saved from eclampsia
	49	Lualaba health zone, Lualaba province	Nutrition	Nutrition education sessions reach hundreds of mothers in Lualaba
	50	Dilala health zone, Lualaba province	HIV	A young woman finds a way forward with HIV
	51	Manika health zone, Lualaba province	MNCH	A campaign to promote antenatal care becomes a lifeline for a teenager in need
	52	Dibaya health zone, Kasai Central province	Champion Community	"Youth, take responsibility for your actions": Reversing youth delinquency in Dibaya, DRC

Qtr	N°	Story Location	Health Topic	Title
PY2Q4	53	Katana health zone, Sud Kivu province	FP	Training community health workers to provide injectable contraceptives
	54	Kalenda health zone, Lomami province	Malaria	Open-door days improve malaria management in the Kalenda health zone
	55	Manika, Bunkeya, and Lualaba health zones, Lualaba province	TB	Mini-campaigns improve TB detection in Lualaba Province
	56	Luiza health zone, Kasai Central province	FP	A farmer becomes a community-based distributor of family planning services
	57	Nundu health zone, Sud Kivu province	RBF	Performance-based payments motivate a health center to improve health service delivery
	58	Mubumbano health zone, Sud Kivu province	Access to care	Getting children to health facilities for treatment of childhood illnesses
	59	Mpokolo health zone, Kasai Oriental province	Nutrition	Survival thanks to nutritional counseling: Emmany's story
	60	Manika health zone, Lualaba province	HIV	Improving HIV care and management in hard-to-reach places
	61	Luputa health zone, Lomami province	WASH	Building ownership for maintaining water sources in the rural DRC
	62	Lodja health zone, Sankuru province	Champion Community	Champion Communities: Autonomous capacity building boosts community activities
PY3Q1	63	Bibanga health zone, Lomami province	MNCH	Results-based financing engages community health workers in the fight against maternal mortality in Bibanga
	64	Mwene Ditu health zone, Lomami province	MNCH	A life saved at the Emmaüs maternity ward
	65	Dilala health zone, Lualaba province	Nutrition	Growing up healthy: Exclusive breastfeeding makes a champion out of Mamie Itshika
	66	Dilala health zone, Lualaba province	Nutrition	Stopping postpartum hemorrhage by initiating breastfeeding within one hour of delivery
	67	Nundu health zone, Sud Kivu province	RBF	Providing better-quality services through results-based financing brings health care home to Nundu Hospital
	68	Kabondo Dianda health zone, Haut Lomami province	Malaria	Intermittent preventive treatment benefits the women of Kabondo Dianda
	69	Nundu health zone, Sud Kivu province	FP	Increased number of new family planning acceptors following a mini-campaign in Nundu
	70	Fizi health zone, Sud Kivu province	Fistula	"Now I can live like everyone else, thank you!"

Qtr	N°	Story Location	Health Topic	Title
PY3Q2	71	Mwene Ditu health zone, Lomami province	TB	Identifying drug-resistant cases of tuberculosis in the DRC
	72	Mpokolo health zone, Kasai Oriental province	MNCH	Better leadership, better health: A health zone management team improves the rate of antenatal care visits
	73	Mwene Ditu health zone, Lomami province	FOSACOF	Evaluating and improving clinical quality at Tshiamala Hospital through the FOSACOF approach
	74	Katana health zone, Sud Kivu province	MNCH	Community health workers improve service utilization rates in Katana
	75	Idjwi health zone, Sud Kivu province	Nutrition	“Synergy between community health workers and health care providers improves nutrition for infants and young children”
	76	Kayamba health zone, Haut Lomami province	RBF	Results-based financing leads to infrastructure improvements
	77	Bibanga health zone, Kasai Oriental province	RBF	The Network of Congolese Youth Associations builds its capacity through results-based financing
	78	Dilala health zone, Lualaba province	Nutrition	Practicing exclusive breastfeeding yields many benefits for babies and families
PY3Q3	79	Dibaya health zone, Kasai Central province	FP	Family planning education turns husband and wife into community advocates
	80	Dilala health zone, Lualaba province	Nutrition	“Baby Genesis grows up healthy, with support from her parents and community health workers”
	81	Kamiji and Luputa health zones, Lomami province	FP	Increasing the number of contraceptive method users in Kamiji and Luputa
	82	Bilomba health zone, Kasai Central province	WASH	Sustainability of WASH activities in the Bilomba health zone
	83	Kalenda health zone, Lomami province	Malaria	“Providing more pregnant women with intermittent preventive treatment for malaria through a mini-campaign in Kalenda”
	84	Bibanga health zone, Kasai Oriental province	TB	Community involvement helps increase TB case detection in Bibanga
	85	Dilala health zone, Lualaba province	Youth	Social media: The key to conducting youth outreach
	86	Ruzizi health zone, Sud Kivu province	Champion Community	Champion Mamas: The autonomous Champion Community of mothers

Appendix 6. List of Trainings

N°	Training Topic	Dates		Location	Participants		
		Start	End		M	F	T
1	AEN training for health care providers of Bibanga health zone	30-Aug-16	3-Sep-16	Mwene Ditu	28	14	42
2	AEN training of health care providers and CHWs of two health zones (Malemba and Kinkondja)	28-Mar-17	1-Apr-17	Kamina	71	9	80
3	Briefing/training of health care providers of two health zones of Kolwezi coordination (Dilala and Manika) on the PNLS single framework and new WHO instructions on HIV/AIDS	27-Sep-16	25-Oct-16	Kolwezi	127	66	193
4	Clinical Integrated Care Management (CICM) training of health care providers and Community Health Workers (CHW) of three health zones (Fungurume, Lubudi, Bunkeya)	25-Feb-17	5-Mar-17	Kolwezi	39	11	50
5	Family Planning training for health care providers of four health zones (Ndeksha, Lubondaie, Bilomba, Dibaya)	22-Jun-15	26-Jun-15	Luiza	22	6	28
6	Family Planning follow-up visit of health care providers of Dikungu and Tshumbe health zones	3-Jul-17	5-Jul-17	Tshumbe	21	1	22
7	Family Planning follow-up visit of health care providers of Katako Kombe and Djalo health zones	29-Jun-17	7-Jul-17	Tshumbe	17	5	22
8	Family Planning training for Community-based Distributors (CBDs) of Bibanga health zone	10-Jul-16	15-Jul-16	Mwene Ditu	64	11	75
9	Family Planning training for health care providers and CHWs of Fungurume health zone	24-Jun-16	2-Jul-16	Kolwezi	51	24	75
10	Family Planning training of DBC of Dibaya health zone	27-Dec-15	4-Jan-16	Luiza	48	20	68
11	Family Planning training of health care providers and CHWs in two health zones (Dilala and Manika) of Kolwezi	14-Nov-16	24-Nov-16	Kolwezi	32	54	86
12	HIV training for Psycho-social Assistants (APS) of HIV care sites for two health zones (Fungurume and Lubudi)	1-Jul-16	3-Jul-16	Kolwezi	34	21	55
13	HIV training for APS of HIV care sites for three health zones (Manika, Dilala, Lualaba)	21-Jun-16	24-Jun-16	Kolwezi	36	37	73
14	HIV training of laboratory technicians (LT) of HIV care sites for two health zones (Fungurume and Lubudi)	20-Jun-16	23-Jun-16	Kolwezi	30	17	47
15	HIV training of LTs of HIV care sites for three health zones (Manika, Dilala, Lualaba)	25-Jun-16	27-Jun-16	Kolwezi	25	14	39
16	HIV training on HIV/B+ option for Haut-Lomami Management Team, health care providers, and LTs of three health zones (Kitenge, Kayamba, Songa)	27-Jun-15	2-Jul-15	Kamina	26	11	37
17	HIV training on HIV/B+ option for Haut-Lomami Management Team, health care providers, and LTs of Kabongo health zone	27-Jun-15	2-Jul-15	Kamina	8	7	15
18	HIV training on HIV/B+ option for Haut Lomami Management Team, health care providers, and LTs of three health zones (Malemba, Muolmba, Kinkondja)	6-Jul-15	8-Jul-15	Kamina	19	2	21
19	Integrated Community Care Management (iCCM) follow-up visit of CHWs of Tshumbe health zone	29-Jun-17	7-Jul-17	Tshumbe	55	52	107
20	iCCM training of health care providers and CHWs of two health zones (Kabongo and Songa)	4-Mar-17	20-Mar-17	Kamina	38	5	43
21	iCCM training of health care providers and CHWs of Kabinda health zone	11-Sep-16	17-Sep-16	Mwene Ditu	50	8	58

N°	Training Topic	Dates		Location	Participants		
		Start	End		M	F	T
22	iCCM training of health care providers and CHWs of Kafakumba health zone	14-Jan-17	22-Jan-17	Kolwezi	44	3	47
23	iCCM training of health care providers and CHWs of Kalamba health zone	20-Jan-17	26-Jan-17	Kolwezi	42	6	48
24	Leadership Development Program (LDP) approach workshop of Muresha health zone teams	11-Jul-17	13-Jul-17	Bukavu	14	1	15
25	Malaria training of health care providers of Bibanga health zone	24-Apr-16	25-Apr-16	Mwene Ditu	18	1	19
26	Malaria training of health care providers of Bunyakiri health zone	21-Jul-16	23-Jul-16	Bukavu	64	3	67
27	Malaria training of health care providers of Dikungu health zone	25-Jun-16	30-Jun-16	Tshumbe	36	3	39
28	Malaria training of health care providers of Dilala health zone	16-Dec-15	18-Dec-15	Kolwezi	18	9	27
29	Malaria training of health care providers of Djalo health zone	6-Jan-16	8-Jan-16	Tshumbe	27	7	34
30	Malaria training of health care providers of Ibanda health zone	24-Nov-15	26-Nov-15	Bukavu	37	20	57
31	Malaria training of health care providers of Kabongo health zone	12-Dec-15	14-Dec-15	Kamina	60	8	68
32	Malaria training of health care providers of Kadutu health zone	1-Dec-15	3-Dec-15	Bukavu	35	16	51
33	Malaria training of health care providers of Kalenda health zone	26-Apr-16	27-Apr-16	Mwene Ditu	30	0	30
34	Malaria training of health care providers of Kamiji health zone	27-Apr-16	28-Apr-16	Mwene Ditu	14	1	15
35	Malaria training of health care providers of Kanzenze health zone	12-Dec-15	14-Dec-15	Kolwezi	27	9	36
36	Malaria training of health care providers of Katana health zone	14-Jan-16	16-Jan-16	Bukavu	44	11	55
37	Malaria training of health care providers of Kayamba health zone	11-Dec-15	13-Dec-15	Kamina	26	4	30
38	Malaria training of health care providers of Kitenge health zone	17-Dec-15	19-Dec-15	Kamina	54	6	60
39	Malaria training of health care providers of Lemera health zone	16-Aug-16	18-Aug-16	Uvira	54	8	62
40	Malaria training of health care providers of Lomela health zone	30-Dec-15	1-Jan-16	Kole	42	7	49
41	Malaria training of health care providers of Luputa health zone	24-Apr-16	25-Apr-16	Mwene Ditu	29	4	33
42	Malaria training of health care providers of Manika health zone	11-Dec-15	13-Dec-15	Kolwezi	29	6	35
43	Malaria training of health care providers of Minova health zone	1-Aug-16	3-Aug-16	Bukavu	54	4	58
44	Malaria training of health care providers of Miti-Murhesa health zone	18-Jan-16	20-Jan-16	Bukavu	51	12	63
45	Malaria training of health care providers of Mpokolo health zone	27-Apr-16	28-Apr-16	Mweneditu	11	4	15
46	Malaria training of health care providers of Mubumbano health zone	17-Dec-15	19-Dec-15	Bukavu	43	8	51
47	Malaria training of health care providers of Mutshatsha health zone	17-Dec-15	19-Dec-15	Kolwezi	22	10	32
48	Malaria training of health care providers of Mweneditu health zone	7-Dec-15	9-Dec-15	Mwene Ditu	29	2	31
49	Malaria training of health care providers of Nundu health zone	14-Aug-16	16-Aug-16	Uvira	56	6	62
50	Malaria training of health care providers of Ruzizi health zone	23-May-16	25-May-16	Uvira	48	9	57
51	Malaria training of health care providers of Songa health zone	16-Dec-15	18-Dec-15	Kamina	52	10	62
52	Malaria training of health care providers of Tshumbe health zone	9-Jan-16	11-Jan-16	Tshumbe	31	3	34
53	Malaria training of health care providers of Uvira health zone	19-May-16	21-May-16	Uvira	51	9	60
54	Malaria training of health care providers of Vangakete health zone	3-Jan-16	5-Jan-16	Kole	31	9	40
55	Malaria training of health care providers of Walungu health zone	21-Dec-15	24-Dec-15	Bukavu	49	11	60
56	Malaria training of health care providers of Wembonyama health zone	1-Jul-16	5-Jul-16	Tshumbe	32	3	35
57	Malaria training of health care providers of Winkong health zone	24-Apr-16	25-Apr-16	Mwene Ditu	17	2	19

N°	Training Topic	Dates		Location	Participants		
		Start	End		M	F	T
58	Malaria training of health care providers of Kamina DPS health zone	14-Jun-16	16-Jun-16	Kamina	13	0	13
59	Malaria training of health care providers of Sankuru health district	29-Dec-15	12-Jan-16	Kole	132	25	157
60	Management of malaria with artesunate suppository and injectable training/Briefing of health care providers of Kalole health zone	24-Oct-16	26-Oct-16	Bukavu	14	5	19
61	Management of malaria with artesunate suppository and injectable training/Briefing of health care providers of Kamituga health zone	12-Nov-16	14-Nov-16	Bukavu	50	15	65
62	Management of malaria with artesunate suppository and injectable training/Briefing of health care providers of Kaziba health zone	26-Oct-16	26-Oct-16	Bukavu	32	18	50
63	Management of malaria with artesunate suppository and injectable training/Briefing of health care providers of Kitutu health zone	21-Oct-16	23-Oct-16	Bukavu	42	18	60
64	Management of malaria with artesunate suppository and injectable training/Briefing of health care providers of Mwana health zone	20-Oct-16	20-Oct-16	Bukavu	45	20	65
65	Management of malaria with artesunate suppository and injectable training/Briefing of health care providers of Mwenga health zone	8-Nov-16	10-Nov-16	Bukavu	43	14	57
66	Management of malaria with artesunate suppository and injectable training/Briefing of health care providers of Nyangezi health zone	17-Oct-16	17-Oct-16	Bukavu	42	15	57
67	RBF Workshop for health care providers of Kolwezi district to implanting HIV approach	19-Jul-16	27-Jul-16	Kolwezi	53	21	74
68	RBF contractualization workshop (Year 3) for RBF contracting structures of Nundu health zone	25-Nov-15	29-Nov-15	Uvira	26	1	27
69	RBF contractualization workshop (Year 3) for RBF contracting structures of Bibanga health zone	12-Nov-15	21-Nov-15	Mwene Ditu	12	0	12
70	RBF contractualization workshop (Year 3) for RBF contracting structures of Kanzenze health zone	18-Nov-15	22-Nov-15	Kolwezi	24	3	27
71	RBF contractualization workshop (Year 3) for RBF contracting structures of Kayamba health zone	10-Nov-15	14-Nov-15	Kamina	16	3	19
72	RBF contractualization workshop (Year 3) for RBF contracting structures of Lomela health zone	28-Oct-15	30-Oct-15	Kole	34	0	34
73	RBF contractualization workshop (Year 3) for RBF contracting structures of Wembonyama health zone	28-Oct-15	30-Oct-15	Tshumbe	28	1	29
74	RBF contractualization workshop (Year 4) for RBF contracting structures of Bibanga health zone	10-Nov-16	14-Nov-16	Mwene Ditu	17	3	20
75	RBF contractualization workshop (Year 4) for RBF contracting structures of Kanzenze health zone	14-Nov-16	18-Nov-16	Kolwezi	37	2	39
76	RBF contractualization workshop (Year 4) for RBF contracting structures of Kayamba health zone	13-Nov-16	17-Nov-16	Kayamba	21	4	25
77	RBF contractualization workshop (Year 4) for RBF contracting structures of Lomela health zone	17-Dec-16	22-Dec-16	Kole	25	0	25
78	RBF contractualization workshop (Year 4) for RBF contracting structures of Luiza health zone	7-Nov-16	10-Nov-16	Luiza	27	1	28

N°	Training Topic	Dates		Location	Participants		
		Start	End		M	F	T
79	Malaria refresher training for health care providers of Kalonge health zone	6-Apr-17	8-Apr-17	Bukavu	41	3	44
80	Malaria trainings for health care providers of Bilomba health zone	11-Dec-15	13-Dec-15	Luiza	23	2	25
81	Several Malaria trainings of health care providers of Dibaya health zone	10-Dec-15	15-Dec-15	Luiza	23	2	25
82	Several Malaria trainings of health care providers of Idjwi health zone	24-Mar-17	28-Mar-17	Bukavu	50	9	59
83	Several Malaria trainings of health care providers of Kaniola health zone	28-Feb-17	2-Mar-17	Bukavu	34	6	40
84	Several malaria trainings of health care providers of Lubondaie health zone	11-Dec-15	13-Dec-15	Luiza	23	2	25
85	Several Malaria trainings of health care providers of Lulingi health zone	18-Mar-17	19-Mar-17	Bukavu	21	1	22
86	Several Malaria trainings of health care providers of Ndeksha health zone	11-Dec-15	13-Dec-15	Luiza	23	2	25
87	Sexual and Reproductive Health training for Youth and Adolescents of Dilala and Manika health zones	26-Jan-17	28-Jan-17	Kolwezi	13	7	20
88	TB/HIV,TB/MDR and PATI-5 training for health care providers, LTs, HTZMTs, and CHWs of three health zones (Songa, Kabongo, Kitenge)	18-Sep-16	22-Sep-16	Kamina	26	2	28
89	TB training on PATI-5 for DPS management team of Kasai Oriental and IHPplus staff of Mweneditu	20-Mar-17	24-Mar-17	Mwene Ditu	7	3	10
90	TB training on PATI-5 for DPS management team of Lualaba and IHPplus staff of Kolwezi	26-Feb-17	4-Mar-17	Kolwezi	1	13	14
91	TB training on PATI-5 for DPS management team of Sankuru and IHPplus staff of Kole and Tshumbe	30-Mar-17	3-Apr-17	Kole	14	5	19
92	TB training on PATI-5 for DPS management team of Sud Kivu and IHPplus staff of Bukavu	27-Mar-17	31-Mar-17	Bukavu	16	1	17
93	Technical verification of RBF data of contracting structures for PY2Q2 of Lomela health zone	21-May-15	6-Jun-15	Kole	14	0	14
94	TOT AEN training for health zone management teams (HZMT) and health care providers of two health zones (Malemba and Kinkondja)	8-Sep-16	12-Sep-16	Kamina	66	18	84
95	TOT AEN training for HZMTs and health care providers of Kinkondja health zone	8-Sep-16	12-Sep-16	Kamina	35	7	42
96	Training for health care providers and CHWs of Kanzenze and Mutshatsha health zones in Ante natal consultation revitalized	24-May-16	28-May-16	Kolwezi	49	8	57
97	Training for HZMT,WASH providers, and WASH committee of Kanda Kanda health zone on WASH participative approach	14-Sep-16	24-Sep-16	Mwene Ditu	375	78	453
98	Training of 3 Champion Communities (Kabongo) and 2 Champion Communities (Songa) on management of subsidies	30-Aug-16	10-Sep-16	Kamina	37	26	63
99	Training of 3 Champion Communities (Fungurume) and 1 Champion Community (Dilala) on management of subsidies	29-Dec-15	8-Jan-16	Kolwezi	39	20	59
100	Training of BATWABEMBA Community Organization (CBO) members of Kayamba health zone in RBF/community verification C103	23-Jun-15	25-Jun-15	Kamina	6	4	10
101	Training of Champion Communities of Bukavu on management of subsidies	6-Dec-15	19-Dec-15	Bukavu	11	4	15

N°	Training Topic	Dates		Location	Participants		
		Start	End		M	F	T
102	Training of Champion Communities of Uvira on management of subsidies	16-Dec-15	19-Dec-15	Uvira	24	6	30
103	Training of CWHs of Kanda Kanda on competence approach	23-Jun-16	28-Jun-16	Mwene Ditu	48	19	67
104	Training of CBO members of Kolwezi in RBF/community verification	3-Oct-16	5-Oct-16	Kolwezi	21	27	48
105	Training of District Health Management Team (DHMT) and IHPplus of Sankuru on DHIS2	5-Dec-15	9-Dec-15	Kole	4	0	4
106	Training of DHMT and IHPplus staff of Kasai Central on DHIS2	2-Dec-15	4-Dec-15	Kananga	10	2	12
107	Training of DHMT and IHPplus staff of Kasai Central on Routine Data Quality Assessment (RDQA)	25-Oct-15	27-Oct-15	Kananga	16	2	18
108	Training of DHMT and IHPplus staff of Lualaba on DHIS2	26-Nov-15	30-Dec-15	Kolwezi	6	0	6
109	Training of DHMT and IHPplus staff of Lualaba on RDQA	28-Dec-15	30-Dec-15	Kolwezi	15	0	15
110	Training of DHMT and IHPplus staff of Sankuru on RDQA	7-Sep-15	16-Sep-15	Tshumbe	17	0	17
111	Training of health care providers of Luiza health zone on the MNCH competency-based approach	27-Dec-15	10-Jan-16	Luiza	14	2	16
112	Training of health care providers and HZMT of Bibanga health zone in revitalized preschool consultation	8-Mar-17	12-Mar-17	Mwene Ditu	4	16	20
113	Training of health care providers and HZMT of Dibindi health zone in revitalized preschool consultation	27-Feb-17	3-Mar-17	Mwene Ditu	4	12	16
114	Training of health care providers and HZMT of Lemera health zone on revitalized preschool consultation	6-Feb-17	12-Feb-17	Uvira	24	2	26
115	Training of health care providers and HZMT of Mweneditu health zone in revitalized preschool consultation	7-Mar-17	11-Mar-17	Mwene Ditu	20	6	26
116	Training of health care providers of Bibanga on competency-based approach	30-Aug-16	3-Sep-16	Mwene Ditu	28	14	42
117	Training of health care providers of Kanda Kanda on competency-based approach	19-Jun-16	29-Jun-16	Mwene Ditu	16	2	18
118	Training of health care providers of Luambo health zone on the competency-based approach of MNCH	8-Jul-16	22-Jul-16	Luiza	23	25	48
119	Training of health care providers two health zones of Luiza on MNCH competency-based approach	26-Dec-15	16-Jan-16	Luiza	99	0	99
120	Training of health care providers of Ndekeshya on competency-based approach	27-Dec-15	7-Jan-16	Luiza	54	12	66
121	Training of health care providers of the two health zones (Dikungu and Wembonyama) in revitalized preschool consultation	29-Dec-15	12-Jan-16	Tshumbe	132	25	157
122	Training of health care providers of the two health zones (Kayamba and Songa) in revitalized preschool consultation	17-Sep-16	21-Sep-16	Kamina	73	15	88
123	Training of health care providers of the Dibaya health zone in revitalized preschool consultation	8-Sep-16	12-Sep-16	Luiza	20	3	23
124	Training of health care providers of five health zones of Malemba in HBB and MNCH competency-based approach	26-Feb-17	17-Mar-17	Kamina	243	116	359
125	Training of health care providers of Dibaya health zone on competency-based approach	27-Dec-15	11-Jan-16	Luiza	14	2	16
126	Training of health care providers of Dilala and Manika health zones in MNCH competency-based approach	20-Feb-17	17-Mar-17	Kolwezi	25	41	66
127	Training of health care providers of Luiza health zone on competency-based approach	27-Dec-15	11-Jan-16	Luiza	34	11	45

N°	Training Topic	Dates		Location	Participants		
		Start	End		M	F	T
128	Training of health care providers on community-based nutrition of Kolwezi DPS	9-Dec-16	11-Dec-16	Kolwezi	64	24	88
129	Training of health care providers of Bibanga Hospital on the TETU approach	10-Dec-16	21-Dec-16	Mwene Ditu	25	5	30
130	Training of maternity providers of three health zones (Kadutu, Bagira, Miti Murhesa) in HBB and AMS	20-Apr-17	25-Apr-17	Bukavu	40	62	102
131	Training of maternity providers of four health zones of Sankuru DPS (Dikungu, Djalo Ndjeka, Katako Kombe, Tshumbe) in HBB and AMS	25-Jun-17	6-Jul-17	Tshumbe	105	41	146
132	Training of Trainers (TOT) of Kolwezi DPS on community-based nutrition	4-Oct-16	7-Oct-16	Kolwezi	19	9	28
133	TOT for HZMTs of Luiza and Mwene Ditu DPS on WASH participatory approach	24-Aug-16	27-Aug-16	Luiza and Mwene Ditu	35	2	37
134	Training on water quality control for health care providers and WASH supervisors of Ndeksha health zone	16-Aug-16	17-Aug-16	Luiza	58	6	64
135	Briefing of trainers and HZMTs on the IQA and practical training in the health zones of the regional division of Mweneditu	19-Feb-18	26-Feb-18	Mwene Ditu	42	7	49
136	Briefing of providers and CHWs on the management of sexual violence cases in the health zones of Dilala and Manika	20-Feb-17	1-Mar-17	Kolwezi	25	41	66
137	Briefing of providers of the health zones of Lodja, Ototo, Bena-Dibele, and Kole on HBB,AMS, and SMK	16-Feb-18	6-Mar-18	Kole	50	39	89
138	Briefing of trainers and HZMTs on the IQA and practical training in the health zones of the Lualaba DPS	5-Feb-18	11-Feb-18	Kolwezi	36	5	41
139	Data quality enhancement efforts: RDQA and support for monthly reviews in Luiza coordination	27-Feb-18	3-Mar-18	Kasai Central	12	0	12
140	Data quality enhancement efforts: RDQA and support for monthly reviews in the Sankuru DPS	27-Feb-18	3-Mar-18	Kole	12	0	12
141	Briefing of providers of the health zone of Bibanga on HBB,AMS, and SMK	6-Feb-18	9-Feb-18	Mwene Ditu	12	1	13
142	Briefing of providers of the health zone of Mpokolo on HBB, AMS, and SMK	6-Feb-18	9-Feb-18	Mwene Ditu	11	10	21
143	Briefing of providers of the health zone of Kanda Kanda on HBB, AMS, and KMC	8-Feb-18	10-Feb-18	Mwene Ditu	20	4	24
144	Briefing of providers of the health zones of Luputa on HBB,AMS, and KMC	11-Feb-18	14-Feb-18	Mwene Ditu	30	6	36
145	Briefing of trainers on the implementation strategy of the IQA in the DPS of Sankuru	27-Feb-18	3-Mar-18	Kole	12	0	12
146	Training of regional trainers on the implementation of the integrated supervision approach in the DPS of Sud Kivu	7-Mar-18	10-Mar-18	Bukavu	19	1	20
147	Briefing of trainers and HZMTs on the IQA and practical training in the health zones of the DPS of Bukavu	26-Feb-18	5-Mar-18	Bukavu	41	4	45
148	Briefing of providers of the health zones of Lodja, Dikungu, Omendjadi, and Tshumbe on HBB,AMS, and SMK	8-Mar-18	21-Mar-18	Kole	73	57	100
149	Briefing of trainers and HZMTs on the IQA in the health zones of the DPS of Luiza	15-Feb-18	24-Feb-18	Kolwezi	12	0	12
150	Briefing of CBDs in the health zone of Lualaba, coupled with the FP mini-campaign supervised by Kolwezi	22-Mar-18	1-Apr-18	Kolwezi	12	4	16

N°	Training Topic	Dates		Location	Participants		
		Start	End		M	F	T
151	Briefing of CBDs in four Sud Kivu health zones (Walungu, Katana, Nundu, Minova), coupled with FP mini-campaign supervised by Bukavu	26-Feb-18	5-Mar-18	Bukavu	63	37	100
152	Data quality enhancement visit: RDQA and support for monthly reviews in the health zones of Yangala and Kalomba	5-Feb-18	13-Feb-18	Luiza	78	9	87
153	Briefing of providers of the health zones of Mwene Ditu on HBB, AMS, and KMC	2-Feb-18	5-Feb-18	Mwene Ditu	27	3	30
154	Briefing of CBDs in the two Lomami health zones (Kamiji and Luputa), coupled with mini-campaign on FP supervised by Mwene Ditu	12-Feb-18	17-Feb-18	Mwene Ditu	23	11	34
155	Briefing of CBDs in the six Sankuru health zones (Dikungu, Lodja, Lomela, Omendjadi, Tshumbe, Wembonyama), coupled with mini-campaign on FP supervised by Kole	9-Mar-18	20-Mar-18	Kole and Tshumbe	73	57	130
156	Data quality enhancement efforts: RDQA and support for monthly reviews	9-Apr-18	13-Apr-18	Luiza	12	0	12
157	Training of regional trainers on the implementation of the integrated supervision approach in the DPS of Lualaba	8-May-18	12-May-18	Kolwezi	24	3	27
158	Training of regional trainers on the implementation of the integrated supervision approach in the DPS of Sankuru	8-May-18	11-May-18	Kole	22	3	25
159	Briefing of providers in health zones of Uvira coordination on HBB, AMS, and KMC	26-Apr-18	8-May-18	Bukavu	82	76	158
160	Training of regional trainers on the implementation of the integrated supervision approach in the DPS of Kasai Oriental	7-May-18	12-May-18	Luiza	15	2	17
161	Training of regional trainers on the implementation of the integrated supervision approach in the DPS of Lomami	7-May-18	12-May-18	Mwene Ditu	11	3	14
TOTAL					6,025	1,914	7,909

Appendix 7. Documents and/or Tools Developed by the MOH with support from DRC-IHPplus

N°	Document Description	Purpose	Use		Participation Type			Status
			Internal	External	Technical	In-kind	Financial	
TB								
1	HIV-TB data collection tool		✓	✓	✓		✓	Distributed to health centers
2	Registration record of TB contact cases	Lists persons who help identify suspected cases of TB in the community	✓	✓	✓		✓	Distributed to health centers
3	Tool to centralize records of contact cases during mini-campaigns	Centralizes suspected cases and sorts them by category; this data collection tool is used during mini-campaigns.	✓	✓	✓			Distributed to local NGOs
EPI								
4	Data collection and management tool (revised version)	Updating tools with new vaccines to be used starting in Sept. 2018			✓			
5	Growth monitoring chart for girls and boys			✓			✓	Reprinting in progress
RBF								
6	Guide for the technical monitoring procedures of RBF services		✓	✓	✓		✓	
7	Invoice approval guide		✓	✓	✓		✓	
8	Indicator tool guide		✓	✓	✓		✓	
9	Handbook for the contracting and monitoring agency		✓	✓	✓		✓	
10	Community monitoring guide		✓	✓	✓		✓	
11	Portal user guide		✓	✓	✓		✓	
12	Guide for developing management plans		✓	✓	✓		✓	
13	Integrated supervision tools		✓	✓	✓		✓	Shared with DPS, BCZ, GRH, and health centers (during training sessions)
14	Guide for implementing the IQA		✓	✓	✓		✓	Shared with DPS, BCZ, GRH, and health centers (during training sessions)

N°	Document Description	Purpose	Use		Participation Type			Status
			Internal	External	Technical	In-kind	Financial	
MNCH								
15	iCCM case recording form (graphical)	Updated tools, 2016 version; reprinting for distribution to community care sites and health centers						
16	Register of sick-child visits to the community care site			✓	✓	✓		
17	Community care site trainer's guide			✓	✓			
18	Community care site implementation guide			✓	✓			
19	Job aids for CHWs working at community care sites			✓	✓	✓		
20	Supervisor's manual			✓	✓			
21	Community care site "RUMER" (Register for the record of essential drugs use and revenues)			✓	✓	✓		
22	Community care site monthly report			✓	✓	✓		
23	Community care site practical training manual			✓	✓			
24	Clinical IMNCI Form 0–2 months			✓	✓	✓		
25	Clinical IMNCI Form 2 months–5 years			✓	✓	✓		
26	Logbook of child consulting at the Health Center for illness			✓	✓			
27	Triage form for GRHs			✓	✓			
28	IMNCI Strategic Plan 2017–2021			✓	✓			
29	ENAP plan development: 2017–2020 Action Plan for each newborn				✓	✓		

N°	Document Description	Purpose	Use		Participation Type			Status
			Internal	External	Technical	In-kind	Financial	
Communication								
30	Social media survey to identify more effective ways of reaching youth and adolescents with sexual health messages, conducted in the health zones of Dilala and Manika, Lualaba province		✓	✓	✓		✓	
31	Evaluation of WASH services in rural areas of the WASH health zones of Luputa and Kanda Kanda		✓		✓		✓	
Malaria								
32	Evaluation of use of pre-referral treatment for severe malaria in community care sites in the DRC		✓	✓	✓		✓	
RH								
33	FP communication plan development		✓	✓	✓			Pending approval
34	RH strategic plan development		✓	✓	✓		✓	Pending approval
35	National Strategy for obstetric fistula eradication		✓	✓	✓			Pending approval

Appendix 8. Select Pharmaceutical Data

Table 1. IHPplus funding for storage and delivery of medicines to health facilities

			Storage Costs (USD)			Delivery Costs to Health Facility			TOTAL
Province	Warehouse (CDR)	PY	Malaria	HIV	FP	Malaria	HIV	FP	
Sud Kivu	APAMESK, 8th CEPAC, and BDOM	PY1	275,921		17,515	63,874			357,310
		PY2	97,519			61,998			159,517
Kasaï Central	CADIMEK	PY1	43,192		7,683	16,210			67,085
		PY2	44,789		4,052	15,326			64,167
Kasaï Oriental	CADMEKO	PY1	42,418			19,334			61,752
		PY2	37,219			37,914			75,133
Sankuru	CAMESANK	PY1	26,942			14,249			41,191
		PY2	32,722		2,740	36,795			72,257
Lualaba	CAMELU	PY1	38,834		9,665	33,825			82,324
		PY2	89,472	146,186	4,107	116,490			356,255
Kinshasa	CAMESKIN	PY1							0
		PY2		268,181			9,567		277,748
Order/Delivery Total			729,028	414,367	45,762	416,015	9,567	0	1,614,739

Table 2. Status of emergency order for eight EGMs

CDR	Total order value (USD)	Order delivered as of July 2018 (USD)	Order remaining to deliver as of July 2018 (USD)
APAMESK	106,275.35	67,493.28	38,782.07
BDOM Bukavu	97,469.01	72,239.97	25,299.04
CAMELU Kolwezi	55,026.97	55,026.97	0
CAMESANK – Lodja	195,226.29	162,112.39	33,113.90
CEPAC Bukavu / Depot Pharm	91,516.33	60,260.79	31,255.54
Depot Chemonics Kamina	15,257.03	15,257.03	0
MSH/CADIMEK – Kananga	74,681.84	29,315.70	45,366.14
MSH/CADMEKO – Mbuji Mayi	71,302.00	46,732.03	24,569.97
Order/Delivery Total	706,754.82	504,438.16	\$193,316.66
Level of execution	100%	72%	28%

Table 3. Health zone savings per province (from use of their EGM credit lines during IHP and IHPplus)

Province	CDR	Number of health zones	Funds available (USD)	Observations
Kasaï Central	CADIMEK	9	134,875	Funds managed by CADIMEK
Kasaï Oriental	CADMEKO	9	115,007	Funds managed by CADMEKO
Lualaba	CAMELU Kolwezi	8	11,802	Funds managed by health zones
Sankuru	CAMESANK	16	153,297	Funds managed by DPS
Sud Kivu	BDOM Bukavu	27	665,176	Funds managed by health zones in their respective bank accounts
	APAMESK			
	DCMP 8th CEPAC			
Haut Lomami	Chemonics warehouse (BRASSIMBA)	9	37,485	Funds managed by health zones in their respective bank accounts
Order/Delivery Total		78	1,117,641	

Appendix 9. Integrated Health Project Plus STTA and Conference Attendance PY1 – PY3

N°	Technical Area	Traveler's Name	Organization	Travel Dates	Indicative Scope of Work	Origin / Destination
STTA/Project Management and Monitoring: International Travel PY1						
1	Program Management	Daniel Nelson	MSH	20 Jul–23 Aug 15	Serve as acting DCOP/Technical Director after the former DCOP's departure, while IHPplus recruited for a permanent DCOP	Washington, D.C. / Kinshasa
2	RBF	Alfred Antoine Uzabakiliho	MSH	26 Aug–3 Oct 15	Improve management and usability of the DRC-RBF web portal	Nairobi / Kinshasa
3	Program Management	Dixon Quenensse	OSC	6–19 Feb 16	Assist in the preparation and presentation of the IHPplus International SBCC Summit poster presentation, and assist with the orientation of three new BCC staff members	Newark / Kinshasa / Addis Ababa
4	RBF	Jean Kagubare	MSH	28 Feb–5 Mar 16	Conduct and support the second annual review workshop of the IHPplus RBF program	Boston / Kinshasa
5	MNCH	Stephanie York	MSH	11–19 Mar 16	Conduct needs assessments at seven hospitals in Bukavu, DRC, and surrounding villages in order to determine the composition of a prospective in-kind donation of medical supplies and equipment from Project C.U.R.E. to IHPplus	Newark / Bukavu
6	BCC	Lynn Lawry	OSC	14 Mar–4 Apr 16	Assess and monitor the newly-formed IHPplus independent (autonomous) Champion Communities that are mentored by established Champion Communities, as well as the new Champion Men initiative, and work with the BCC Technical Advisor and BCC field experts to create new reporting and auditing tools	Washington, D.C. / Kinshasa
7	Program Management	Kristin Cooney	MSH	19 Mar–1 Apr 16	Monitor project progress, work with project team on reporting requirements, meet with key partners and USAID, and provide technical inputs as needed to the IHPplus program activities	Boston / Kinshasa
8	BCC	Paul Neely	OSC	19 Apr–10 May 16	Assess the possibilities for an integrated Closed User Group (CUG) covering three telecom operators (Orange, Vodacom, and Airtel) with an emphasis on recommending immediate next steps	Montreal / Kinshasa

N°	Technical Area	Traveler's Name	Organization	Travel Dates	Indicative Scope of Work	Origin / Destination
9	Operations	John McKenney	MSH	18–26 May 16	Assess country security, review the security policy, plans, and guidelines; meet with the County Operations Management Unit, MSH's DRC security committee, and country team; and review the transportation and communication plan	Boston / Kinshasa
10	Program Management	Jeanne Hamon	MSH	7 May–18 Jun 16	Finalize and submit the IHPplus PY1Q3 progress report, prepare for and participate in the PY2 workplanning workshop, and provide project management support to advance other key deliverables	Boston / Kinshasa
International Travel: IHPplus Local Staff and Partners PY1						
1	HIV/AIDS	Dorah Kashosi	MSH	15–20 Nov 15	Participate in the 2015 “Accelerating Children’s HIV/ AIDS Treatment (ACT) Initiative” Regional Workshop	Kinshasa / Lusaka
2	RBF	Delmond Kyanza	MSH	11–18 Dec 15	Attend the 8th Annual Conference on the Science of Dissemination and Implementation and deliver a poster presentation on “Motivating village health development committees with incentives based on performance to improve service utilization rates in DRC”	Kinshasa / Washington, D.C.
3	Nutrition	Matthieu Koy	MSH	17–23 Jan 16	Attend the West Africa “Multi-Sectoral Nutrition Strategy and Global Learning and Evidence Exchange” (MSN-GLEE) conference	Kinshasa / Accra
4	MNCH/ Malaria	Jeanine Musau	MSH	14–20 Feb 16	Attend a meeting on “Scaling up i-CCM in the context of the UNICEF-GFATM Memorandum of Understanding,” organized by UNICEF, and a conference on implementing pre-referral rectal artesunate as a treatment for severe malaria cases, organized by the Medicines for Malaria Venture	Kinshasa / Nairobi
5	MNCH/ Malaria	Jean-Fidèle Ilunga	MOH	14–20 Feb 16	Attend a meeting on “Scaling up i-CCM in the context of the UNICEF-GFATM Memorandum of Understanding,” organized by UNICEF, and a conference on implementing pre-referral rectal artesunate as a treatment for severe malaria cases, organized by the Medicines for Malaria Venture	Kinshasa / Nairobi

N°	Technical Area	Traveler's Name	Organization	Travel Dates	Indicative Scope of Work	Origin / Destination
6	BCC	Jean Baptiste Mputu	OSC	7–11 Feb 16	Attend the First International Summit on SBCC and deliver a poster presentation on “The Contribution of the Champion Communities Approach to Healthy Behaviors and Utilization of Health Services in the DRC”	Kinshasa / Addis Ababa
7	MNCH	Dorah Kashosi	MSH	14–22 Apr 16	Attend the 13th Annual Global Health & Innovation Conference and deliver two poster presentations on “Saving Lives and Improving Health in the DRC: A Health Systems Approach to Saving Mothers and Neonates” and “Breathing Easier in DRC: Simple Technology Saves Newborn Lives,” and visit MSH’s headquarter offices in Medford to share project experiences and lessons learned from the conference	Kinshasa / New Haven / Boston
8	MNCH	Narcisse Naia Embeke	MSH	14–22 Apr 16	Attend the 13th Annual Global Health & Innovation Conference and deliver two poster presentations on “Saving Lives and Improving Health in the DRC: A Health Systems Approach to Saving Mothers and Neonates” and “Breathing Easier in DRC: Simple Technology Saves Newborn Lives,” and visit MSH’s headquarter offices in Medford to share project experiences and lessons learned from the conference	Kinshasa / Hartford / Boston

N°	Technical Area	Traveler's Name	Organization	Travel Dates	Indicative Scope of Work	Origin / Destination
STTA/Project Management and Monitoring: International Travel PY2						
1	DHIS 2	Ismail Yusuf Koleleni	MSH	17 Jul-1 Aug 16	Finalize pending DHIS2 tasks as per workplan activities and train IHPplus users on new features which have been integrated into the system	Washington, D.C./ Kinshasa
2	BCC	Lynn Lawry	OSC	19 Aug-10 Sep 16	To assess the status of IHPplus’ Champion Community sustainability efforts, with an emphasis on assessing their efficiency in obtaining and using grant funds and in exercising their status as NGOs to achieve new community driven BCC campaigns	Washington, D.C./ Kinshasa

N°	Technical Area	Traveler's Name	Organization	Travel Dates	Indicative Scope of Work	Origin / Destination
3	BCC	Paul Neely	OSC	3-24 Sep 16	Update the CommCare application to include maternal, newborn, and child health (MNCH), nutrition, and family planning indicators and implement the application and support its implementation within the IHPplus Champion Communities	Montreal/Kinshasa
4	BCC	Paul Neely	OSC	26 Nov-14 Dec 16	Implement the CommCare data collection application in the Kolwezi coordination	Montreal/Kinshasa
5	HIV/AIDS	Kanjinga Kakanda	MSH	6-22 Feb 17	Provide technical assistance in the implementation of the Electronic Dispensing Tool in the Haut Katanga and Lualaba provinces	Washington, D.C./ Kinshasa
6	Program Management	Kristin Cooney	MSH	18 Feb-10 Mar 17	Monitor project progress, work with project team on reporting requirements, meet with key partners and USAID, and provide technical inputs as needed to the DRC-IHPplus program activities	Boston/Kinshasa
7	BCC	Lynn Lawry	OSC	18 Feb-14 Mar 17	Assess the sustainability of the IHPplus Champion Communities in Mwene Ditu	Washington, D.C./ Kinshasa
8	Communications	David Aronson	MSH	2 Mar-2 Jun 17	Support IHPplus to communicate project successes and results to decision-makers and stakeholders	Washington, D.C./ Kinshasa
9	M&E	Monita Baba Djara	MSH	4-11 Mar 17	Provide support for developing protocols for the planned WASH survey, orient the M&E team on documenting lessons learned and share new orientations and strategies of MSH's M&E at the global level, and review the project M&E plan and staffing	Washington, D.C./ Kinshasa
10	MNCH/FP/RH	Kate Ramsey	MSH	18 Mar-8 Apr 17	Provide technical support to IHPplus FP/RH and MNCH activities and to document end-of-project results	New York/Kinshasa
11	BCC	Lynn Lawry	OSC	16 Apr-10 May 17	Assess IHPplus Champion Communities with small grants funding in Bukavu, Kolwezi, Uvira, and Lodja	Washington, D.C./ Kinshasa

N°	Technical Area	Traveler's Name	Organization	Travel Dates	Indicative Scope of Work	Origin / Destination
International Travel: IHPplus Local Staff and Partners PY2						
1	Finance	Desiré Zongo	MSH	10-29 Aug 16	Complete the Inside NGO trainings "Financial Management for US Government Funding" in Addis Ababa and "USAID Rules and Regulations: Grants and Cooperative Agreements" in Boston, and receive an introduction to the MSH organizational structure and an orientation to MSH and IHPplus at MSH's headquarter offices in Medford	Kinshasa-Addis Ababa-Boston
2	Program Management	Hortense Angoran-Benié	MSH	10-29 Aug 16	Complete the Inside NGO trainings "Financial Management for US Government Funding" in Addis Ababa and "USAID Rules and Regulations: Grants and Cooperative Agreements" in Boston	Abidjan-Addis Ababa-Boston
3	M&E	Moussa Traore	MSH	14-29 Aug 16	Complete the Inside NGO training: "USAID Rules and Regulations: Grants and Cooperative Agreements" in Boston, and receive an introduction to the MSH organizational structure and an orientation to MSH and IHPplus at MSH's headquarter offices in Medford	Kinshasa-Boston
4	EPI	Joseph Kongolo	MSH	10-16 Sep 16	Attend the EPI Managers' meeting organized by the World Health Organization (WHO) Inter-country Support Team for Central Africa, to strengthen and improve access to immunization services in 10 countries in Central Africa	Kinshasa/Douala
5	RBF	Florence William Mpata	MSH	19 Sep-6 Oct 16	Attend the African Health and Economics Policy Association Fourth Biennial Scientific Conference and deliver an oral presentation on "Les facteurs déterminants de la satisfaction des usagers des services de santé dans la ZS de Luiza en RDC"	Kinshasa/Rabat
6	Malaria	Jeanine Musau	MSH	25 Sep-1 Oct 16	Attend the Roll Back Malaria Communication Community of Practice Third Annual Meeting and deliver an oral presentation on "The Contribution of the Champion Communities Approach to Healthy Behaviors and Utilization of Health Services in the DRC"	Kinshasa/Dakar

N°	Technical Area	Traveler's Name	Organization	Travel Dates	Indicative Scope of Work	Origin / Destination
7	BCC	Jean Baptiste Mputu	OSC	25 Sep-1 Oct 16	"Attend the Roll Back Malaria Communication Community of Practice Third Annual Meeting and deliver an oral presentation on ""The Contribution of the Champion Communities Approach to Healthy Behaviors and Utilization of Health Services in the DRC"""	Kinshasa/Dakar
8	Nutrition	Matthieu Koy Matili	MSH	23 Oct-10 Nov 16	Attend the American Public Health Association (APHA) 2016 Conference to present four abstracts on IHPplus interventions in the areas of malaria, nutrition, WASH, and RBF, and visit the MSH headquarters in Medford before and after the conference to prepare their presentations and share findings from the conference with colleagues	Kinshasa/Boston/ Denver
9	Malaria	Jeanine Musau	MSH	23 Oct-10 Nov 16	Attend the APHA 2016 Conference to present four abstracts on IHPplus interventions in the areas of malaria, nutrition, WASH, and RBF, and visit the MSH headquarters in Medford before and after the conference to prepare their presentations and share findings from the conference with colleagues	Kinshasa/Boston/ Denver
10	RBF	Freddy Tshamala	MSH	23 Oct-10 Nov 16	Attend the APHA 2016 Conference to present four abstracts on IHPplus interventions in the areas of malaria, nutrition, WASH, and RBF, and visit the MSH headquarters in Medford before and after the conference to prepare their presentations and share findings from the conference with colleagues	Kinshasa/Boston/ Denver
11		Narcisse Naia Embeke	MSH	12-26 Nov 16	Attend the Fourth Global Symposium on Health Systems Research and deliver an oral presentation on "Improving the usage and quality of maternal and child health services with RBF in the DRC" and a poster presentation on "Saving lives and improving health in the DRC: A health systems approach to saving mothers and neonates," and visit MSH's headquarters in Medford to share his presentation and experiences with MSH colleagues	Kinshasa- Vancouver-Boston

N°	Technical Area	Traveler's Name	Organization	Travel Dates	Indicative Scope of Work	Origin / Destination
12	MNCH	Narcisse Naia Embeke	MSH	26-31 Mar 17	Attend the Institutionalizing Community Health Conference and deliver an oral presentation on "The involvement of community-based organizations: a major factor in the success of RBF projects"	Kinshasa-Johannesburg
13	RBF	Augustin Mwala	MSH	26-31 Mar 17	Attend the Institutionalizing Community Health Conference and deliver an oral presentation on "The involvement of community-based organizations: a major factor in the success of RBF projects"	Kinshasa-Johannesburg
14	RBF	Célestin Bukanga	MOH	26-31 Mar 17	Attend the Institutionalizing Community Health Conference and deliver an oral presentation on "The involvement of community-based organizations: a major factor in the success of RBF projects"	Kinshasa-Johannesburg
15	M&E	Derek Kahongo	MSH	22 Apr-8 May 17	Attended a regional training seminar on monitoring and evaluating HIV and AIDS programs	Kinshasa/Dakar
16	M&E	Alidor Kuamba	MSH	22 Apr-8 May 17	Attended a regional training seminar on monitoring and evaluating HIV and AIDS programs	Kinshasa/Dakar
17	Contracts	Nathalie Mansubi	MSH	6-12 May 17	Attend the Inside NGO training: "USAID Rules and Regulations: Grants and Cooperative Agreements"	Kinshasa/Dakar
18	Contracts	Patricia Kakassi	MSH	6-12 May 17	Attend the Inside NGO training: "USAID Rules and Regulations: Grants and Cooperative Agreements"	Kinshasa/Dakar

N°	Technical Area	Traveler's Name	Organization	Travel Dates	Indicative Scope of Work	Origin / Destination
STTA/Project Management and Monitoring: International Travel PY3						
1	HR	Nadine Murebwayire	MSH	9-30 Oct 17	Provide closeout support to IHPplus with a focus on HR activities	Kigali/Kinshasa
2	Program Management	Kristin Cooney	MSH	2-17 Nov 17	Monitor project progress, work with project team on reporting requirements, meet with key partners and USAID, and provide technical inputs as needed to the DRC-IHPplus program activities	Boston/Kinshasa

N°	Technical Area	Traveler's Name	Organization	Travel Dates	Indicative Scope of Work	Origin / Destination
3	TB	Muluken Melese	MSH	4-17 Mar 18	Review current PMP and targets with the IHPplus team, assess the current project implementation by visiting the TB DOTs programs in communities and health facilities, and hold discussions with the IHPplus TB team and the provincial TB managers on current performance, gaps, and strategies to improve TB DOTs	Washington, D.C./ Kinshasa
4	MNCH/FP/RH	Kate Ramsey	MSH	9-25 Mar 18	Provide technical support to IHPplus FP/RH and MNCH activities and document end-of-project results	New York/Kinshasa
5	Program Management	Dixon Quenensse	OSC	11-22 Mar 18	Provide management support for the resumption of IR 3 activities under the new subaward for OSC	Paris/Kinshasa/ Philadelphia
6	Program Management	Robert Arsenault	OSC	16-23 Mar 18	Provide technical and management support for the resumption of IR 3 activities under the new subaward for OSC	Philadelphia/ Kinshasa
7	BCC	Lynn Lawry	OSC	10 Mar-9 Apr 18	Plan regional conferences for Champion Communities, start the final Champion Community report and Champion Community manual, and review final reports of the small grants program for Champion Communities	Washington, D.C./ Kinshasa
8	BCC	Lynn Lawry	OSC	20 Apr-20 May 18	Attend the Champion Community Regional Exchanges in Bukavu and Lubumbashi, support the production of the Champion Community mini-documentary, and finalize the IR3 section of the IHPplus final report	Washington, D.C./ Kinshasa
9	Program Management	Dixon Quenensse	OSC	10-24 May 18	Attend the Champion Community Regional Exchanges in Bukavu and Lubumbashi and assist with the filming, coordination, and storyboarding of the Champion Community mini-documentary; consolidate reports from the four Champion Community Regional Exchanges; and provide support to the BCC team to draft the IR3 section of the IHPplus final report	Philadelphia/Goma/ Kinshasa

N°	Technical Area	Traveler's Name	Organization	Travel Dates	Indicative Scope of Work	Origin / Destination
10	BCC	Donald Mitchell	OSC	10 May-9 Jun 18	Attend the Champion Community Regional Exchanges in Bukavu and Lubumbashi, and create a high quality mini-documentary featuring the conference proceedings as well as Champion Community activities in the Bukavu coordination	Philadelphia/Goma/Kinshasa
11	Communications	Eleonora Kinnicutt	MSH	25 Apr-18 May 18	Provide support to end-of-project documentation through taking photographs and collecting personal testimonials from beneficiaries and stakeholders in Kinshasa and at IHPplus field sites, to be included in the IHPplus final report	Boston/Kinshasa
12	Communications	Sarah Ranney	MSH	25 Apr-24 May 18	Provide support to end-of-project documentation through taking photographs and collecting personal testimonials from beneficiaries and stakeholders in Kinshasa and at IHPplus field sites, to be included in the IHPplus final report	Boston/Kinshasa
13	Communications	Rebecca Weaver	MSH	2-24 May 18	Provide support to end-of-project documentation through taking photographs and collecting personal testimonials from beneficiaries and stakeholders in Kinshasa and at IHPplus field sites, to be included in the IHPplus final report	Nairobi/Goma/Kinshasa
14	Program Management	Kristin Cooney	MSH	26 May-14 Jun 18	Provide monitoring, supervision, and technical and management support to IHPplus, with a focus on close-out priorities	Boston/Kinshasa
15	Program Management	Dixon Quenensse	OSC	6-22 Jun 18	Backstop the BCC Technical Advisor in all activities relating to the transition and close out of BCC programming and the transition of activities to project partners	Philadelphia/Kinshasa
International Travel: IHPplus Local Staff and Partners PY3						
1	RBF	Augustin Mwala	MSH	4-15 Jul 17	Attend the International Health Economics Association Conference and deliver two oral presentations on IHPplus' RBF experience in seven health zones in the DRC, and visit the MSH headquarters in Medford to share findings from the conference with colleagues	Kinshasa/Boston

N°	Technical Area	Traveler's Name	Organization	Travel Dates	Indicative Scope of Work	Origin / Destination
2	RBF	Célestin Bukanga	MOH	4-15 Jul 17	Attend the International Health Economics Association Conference and deliver two oral presentations on IHPplus' RBF experience in seven health zones in the DRC, and visit the MSH headquarters in Medford to share findings from the conference with partners	Kinshasa/Boston
3	HIV/AIDS	Emmanuel Mulowayi	MSH	17 Jul-2 Aug 17	Attend the 9th Annual International AIDS Society Conference on HIV Science and deliver a poster presentation entitled "Therapeutic Outcomes of TB-HIV Co-Infected Patients in the Lualaba Mining Province in the DRC"	Kinshasa/Paris
4	HIV/AIDS	Robert Tuala Tuala	MSH	17 Jul-2 Aug 17	Attend the 9th Annual International AIDS Society Conference on HIV Science and deliver a poster presentation entitled "Therapeutic Outcomes of TB- HIV Co-Infected Patients in the Lualaba Mining Province in the DRC"	Kinshasa/Paris
5	Nutrition	Matthieu Koy Matili	MSH	1-9 Nov 17	Visit the MSH headquarters in Medford to prepare their presentations, and attend the APHA 2017 Conference to deliver a poster presentation entitled "Improving the proportion of HIV-positive patients treated with Isoniazid Preventive Therapy (IPT) in Lualaba" and three oral presentations entitled "Impact of nutrition interventions on child survival;" "Therapeutic outcome of TB/HIV co-infected patients;" and "EID Saves Lives in Lualaba."	Kinshasa/Boston/ Atlanta

N°	Technical Area	Traveler's Name	Organization	Travel Dates	Indicative Scope of Work	Origin / Destination
6	HIV/AIDS	Dorah Kashosi	MSH	1-9 Nov 17	Visit the MSH headquarters in Medford to prepare their presentations, and attend the APHA 2017 Conference to deliver a poster presentation entitled "Improving the proportion of HIV-positive patients treated with Isoniazid Preventive Therapy (IPT) in Lualaba" and three oral presentations entitled "Impact of nutrition interventions on child survival," "Therapeutic outcome of TB/HIV co-infected patients," and "EID Saves Lives in Lualaba."	Kinshasa/Boston/ Atlanta
7	M&E	Moussa Traore	MSH	17-24 Mar 18	Participate in the fourth annual DHIS2 Symposium and present key findings from the abstract entitled "Strengthening Health Data Reporting by Integrating National and Project DHIS2 Instances: Experience from DRC"	Kinshasa/ Washington, D.C.



Photo : Lynn Lawry, OSC

For more information, contact:
communications@msh.org
www.msh.org